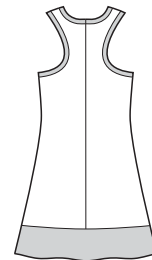




View A Back

View B Back



□ Fabric
■ Contrast

price **3703** MISSES' DRESSES
XS-S-M-L-XL

KWIK *Serge*
Dual Instructions Included

Designed for stretch knits only with 35% stretch across the grain.
Suggested Fabrics: Interlock, textured knits, matte jersey, stretch velvet,
fabrics with spandex Lycra®.

Close fitting pullover dresses have flared skirt, racer back, neckband,
and armhole bands. View B has contrast extension at bottom edge, and
neckband and armhole bands from contrast fabric.

Size	XS	S	M	L	XL	
Finished Length from Natural Waist	View A 38" (97 cm) — All Sizes		View B 20 1/2" (52 cm) — All Sizes			
Material Required: Fabric requirement allows for nap, one-way design or shading. Extra fabric may be needed to match design or for shrinkage.						
Fabric 60" (152 cm) Wide						
View A	2 3/8 (2.20)	2 7/8 (2.65)	2 7/8 (2.65)	3 1/8 (2.85)	3 1/8 (2.85)	yd (m)
View B Fabric	1 (0.95)	1 (0.95)	1 1/8 (1.05)	1 1/8 (1.05)	1 1/2 (1.40)	yd (m)
View B Contrast	3/8 (0.35)	3/8 (0.35)	3/8 (0.35)	5/8 (0.60)	5/8 (0.60)	yd (m)

Notions: Thread.
DUAL INSTRUCTIONS INCLUDED: SERGER (OVERLOCK) AND STANDARD SEWING MACHINES.