



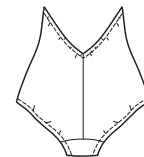
price **3695** **MISSES' SWIMSUITS**
XS-S-M-L-XL

Designed for two-way stretch fabrics with 75% stretch and greatest degree of stretch on lengthwise grain.

Suggested Fabrics: Swimwear fabric with Spandex Lycra®.

Halter style swimsuits have lined front, and ties at back neck. Leg openings, armholes, back, and neckline are finished with elastic. View A has scoop neckline. View B has center front slit with tabs.

View A & B Back



Size	XS	S	M	L	XL	
Material Required: Fabric requirement allows for nap, one-way design or shading. Extra fabric may be needed to match design or for shrinkage.						
Fabric 60" (152 cm) Wide						
View A & B	1/2 (0.50)	5/8 (0.60)	5/8 (0.60)	5/8 (0.60)	3/4 (0.70)	yd (m)
Fabric 45" (115 cm) Wide						
View A & B	3/4 (0.70)	3/4 (0.70)	7/8 (0.80)	7/8 (0.80)	1 (0.95)	
Swimwear Lining 36" (90 cm) Wide (Minimum Width)						
View A & B	1/2 (0.50)	5/8 (0.60)	5/8 (0.60)	5/8 (0.60)	3/4 (0.70)	yd (m)
Notions: Thread, 3/8" (1 cm) wide swimwear elastic—3 yd (2.75 m) for sizes XS-S-M; 3 1/2 yd (3.20 m) for sizes L-XL.						