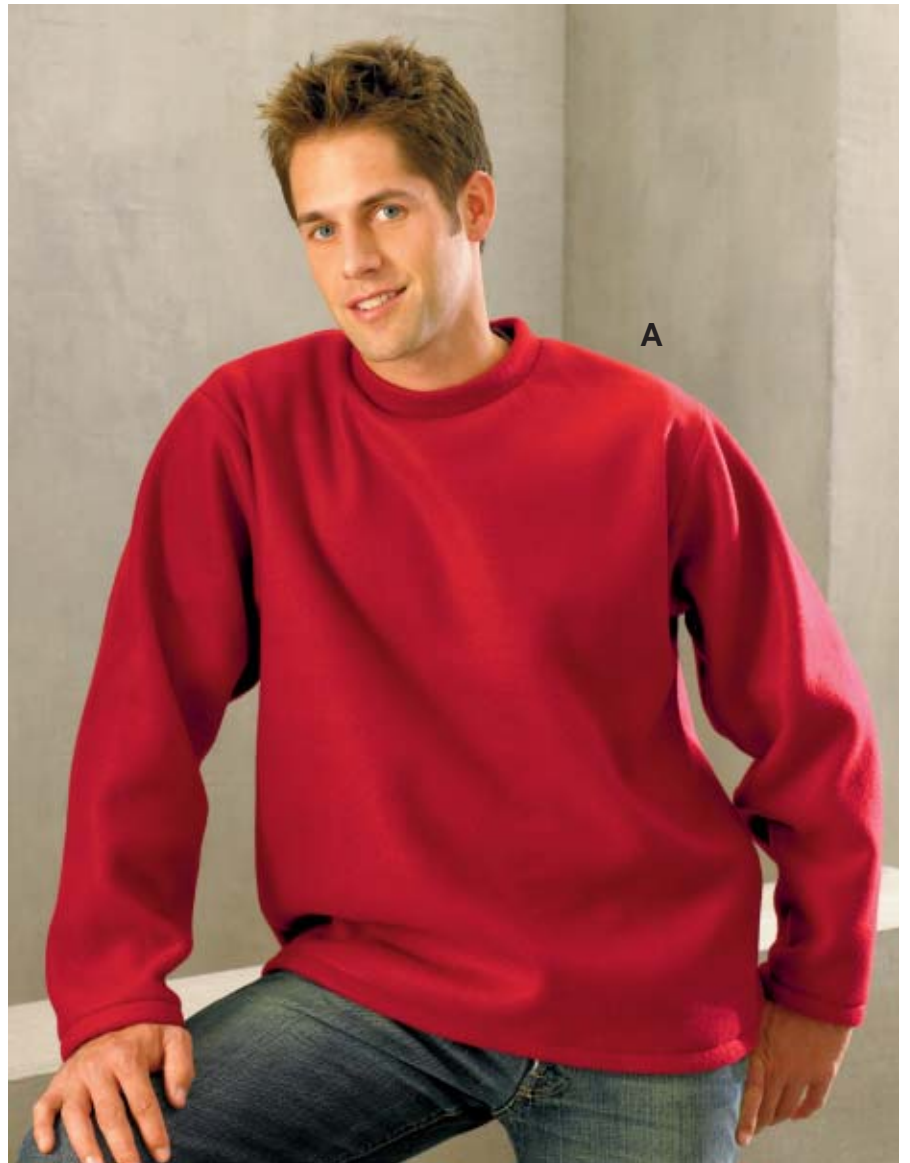
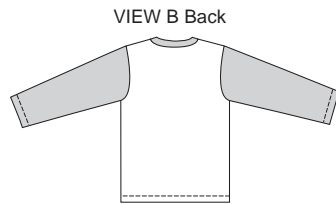
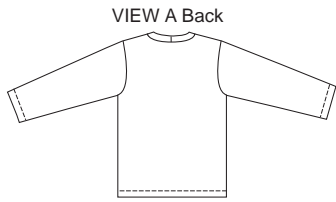


# KWIK Start® LEARN-TO-SEW

ESPECIALLY DESIGNED FOR FIRST SEWING PROJECT!



Men's pullover shirts have hemmed bottom edges, are very easy to make and have special easy-to-follow sewing instructions. View A has round neckline with self-fabric neckband. View B has V-neckline, and sleeves and neckband are from contrast fabric.

**KWIK•SEW®**  
price **3388**

DESIGNED FOR HEAVY STRETCH KNITS ONLY  
Suggested Fabrics: Polarfleece®, heavy fleece, berber fleece

**MEN'S SHIRTS**  
Sizes: S-M-L-XL-XXL

Size	S	M	L	XL	XXL	
<b>Finished Length at Center Back</b>						
View A & B	27 (68)	28 (71)	28 1/2 (73)	29 1/2 (75)	30 1/2 (77)	" (cm)
<b>Material Required:</b> Fabric requirement allows for nap, one-way design or shading. Extra fabric may be needed to match design or for shrinkage.						
<b>Fabric 60" (152 cm) Wide</b>						
View A	1 3/4 (1.60)	1 3/4 (1.60)	1 7/8 (1.75)	1 7/8 (1.75)	2 (1.85)	yd (m)
View B Fabric	1 (0.95)	1 (0.95)	1 (0.95)	1 (0.95)	2 (1.85)	yd (m)
Contrast	7/8 (0.80)	7/8 (0.80)	7/8 (0.80)	7/8 (0.80)	7/8 (0.80)	yd (m)
<b>Notions:</b> Thread, scrap piece of fusible interfacing.						

MEN'S

KWIK Start® LEARN-TO-SEW