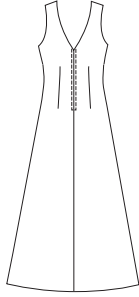
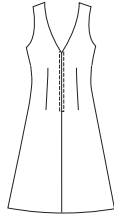


Misses' dresses and shawl. Dresses are fitted with V-neckline on front and back, shaped empire waist on front, center back zipper, and flared skirt. View A has tucks on bodice at center front. View B has gathers on bodice under bust. Shawl is stitched together on one side, and can be worn over one shoulder or both.

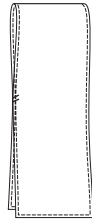
VIEW A Back



VIEW B Back



SHAWL



Finished Size:
20" x 85"
(50 cm x 215 cm)



DRESSES

KWIK-SEW®
price **3382**

DESIGNED FOR LIGHT TO MEDIUM WEIGHT WOVEN FABRICS

Suggested Fabrics: Cotton, cotton types, rayon & blends, crepe, taffeta, linen, linen types, silk, silk types, dupioni, jacquard

MISSSES' DRESSES & SHAWL

DRESS Sizes: XS-S-M-L-XL

SHAWL: One Size

Size	XS	S	M	L	XL	
Finished Length of Skirt from Natural Waist						
View A	38 1/2" (98 cm) – All Sizes					
View B	21 1/2" (55 cm) – All Sizes					
Material Required: Fabric requirement allows for nap, one-way design or shading. Extra fabric may be needed to match design or for shrinkage.						
Fabric 60" (152 cm) Wide						
View A	2 5/8 (2.40)	2 7/8 (2.65)	2 7/8 (2.65)	3 (2.75)	3 (2.75)	yd (m)
View B	1 3/4 (1.60)	1 3/4 (1.60)	1 3/4 (1.60)	1 7/8 (1.75)	2 1/8 (1.95)	yd (m)
Fabric 45" (115 cm) Wide						
View A	3 1/4 (3.00)	3 3/8 (3.10)	3 3/8 (3.10)	4 (3.70)	4 (3.70)	yd (m)
View B	2 5/8 (2.40)	2 3/4 (2.55)	2 3/4 (2.55)	2 3/4 (2.55)	2 7/8 (2.65)	yd (m)
Fabric 45" (115 cm) or 60" (152 cm) Wide						
Shawl	2 3/8 yd (2.20 m)					
Notions: Thread, one 12" (30 cm) zipper, hook & eye set.						