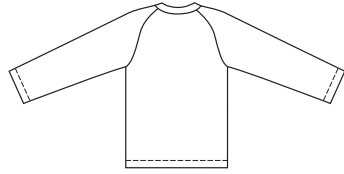
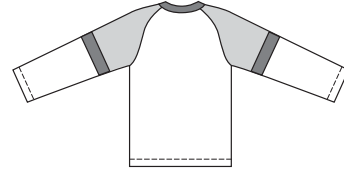


Boys' pullover shirts have shaped raglan sleeves. View A has round neckline and self-fabric neckband. View B has V-neckline and contrast fabric upper sleeve, inset and neckband.

VIEW A Back



VIEW B Back



- Fabric
- Contrast I
- Contrast II



BOYS'

KWIK & EASY™

KWIK•SEW®

price **3366**

DESIGNED FOR HEAVYWEIGHT STRETCH KNITS

Suggested Fabrics: Polarfleece®, heavy fleece, berber fleece

BOYS' SHIRTS

Sizes: XS(4-5)-S(6)-M(7-8)-L(10)-XL(12-14)

Size	XS (4-5)	S (6)	M (7-8)	L (10)	XL (12-14)	
Finished Length at Center Back	15 3/4 (40)	17 (43)	18 1/2 (47)	20 1/4 (51)	22 (56)	" (cm)
Material Required: Fabric requirement allows for nap, one-way design or shading. Extra fabric may be needed to match design or for shrinkage.						
Fabric 60" (152 cm) Wide						
View A	5/8 (0.60)	1 1/4 (1.15)	1 3/8 (1.30)	1 1/2 (1.40)	1 1/2 (1.40)	yd (m)
View B Fabric	5/8 (0.60)	5/8 (0.60)	1 (0.95)	1 1/8 (1.05)	1 1/4 (1.15)	yd (m)
Contrast I	3/8 (0.35)	3/8 (0.35)	3/8 (0.35)	1/2 (0.50)	1/2 (0.50)	yd (m)
Contrast II	1/8 (0.15)	1/8 (0.15)	1/8 (0.15)	1/8 (0.15)	1/8 (0.15)	yd (m)

Notions: Thread.