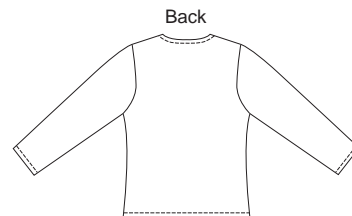


Misses' jacket and flowers. Jacket has narrow hems at all outside edges finished with decorative stitches, or edges can be finished with serger or zigzag stitches. View A flower is layered and can be made from one or several contrast fabrics. View B flower is made from one long strip. View C "patch design" is pieces cut with shears or rotary cutter with pinking or wave blade. Pieces are placed at random and stitched across.



KWIK & EASY™ **KWIK•SEW®**
 price **3313**

DESIGNED FOR HEAVY WEIGHT STRETCH KNITS
 Suggested Fabrics: Polarfleece®, berber fleece, blanket fleece
 Flowers also for other non-fraying fabrics such as felt, faux suede

MISSES' JACKETS & FLOWERS
 Sizes: XS-S-M-L-XL

| Size | XS | S | M | L | XL | |
|--|--------------|--------------|--------------|--------------|--------------|--------|
| Finished Length at Center Back | | | | | | |
| Jacket | 25 1/2 (65) | 26 1/2 (67) | 27 1/2 (69) | 28 1/2 (72) | 29 1/4 (74) | " (cm) |
| Material Required: Fabric requirement allows for nap, one-way design or shading. Extra fabric may be needed to match design or for shrinkage. | | | | | | |
| Fabric 60" (152 cm) Wide | | | | | | |
| Jacket | 1 1/2 (1.40) | 1 1/2 (1.40) | 1 1/2 (1.40) | 1 5/8 (1.50) | 1 5/8 (1.50) | yd (m) |

Notions: Thread. Flowers and "Patch Trim": Scrap pieces of contrast fleece or other non-fraying fabric.
 VIEW B Flower and "Patch Trim": Shears or rotary cutter with pinking or wave blade.