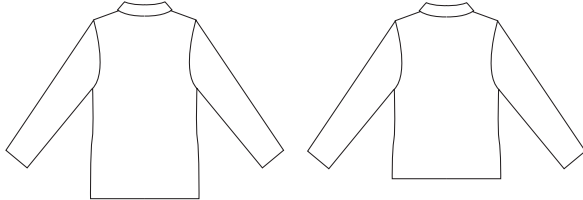


Misses' straight-cut jackets have convertible collar, full-length sleeves, and front button closure. Jacket has optional lining. Appliqué designs are included.

VIEW A Back

VIEW B Back



**KWIK•SEW®**  
**3293** price

**MISSES' JACKETS** DESIGNED FOR MEDIUM WEIGHT WOVEN FABRICS  
 Sizes: XS-S-M-L-XL Suggested Fabrics: Linen, gabardine, crepe, silk and rayon suitings, denim, twill

Size	XS	S	M	L	XL	
<b>Finished Length of Jacket at Center Back</b>						
View A	26 (68)	27 3/4 (70)	28 3/4 (73)	29 3/4 (75)	30 3/4 (78)	" (cm)
View B	22 3/4 (57)	23 1/2 (59)	24 1/4 (61)	25 (63)	25 3/4 (65)	" (cm)
<b>Material Required:</b> Fabric requirement allows for nap, one-way design or shading. Extra fabric may be needed to match design or for shrinkage.						
<b>Fabric 60" (152 cm) Wide</b>						
View A	1 3/4 (1.60)	1 7/8 (1.75)	1 7/8 (1.75)	2 (1.85)	2 (1.85)	yd (m)
View B	1 5/8 (1.50)	1 3/4 (1.60)	1 3/4 (1.60)	1 7/8 (1.75)	1 7/8 (1.75)	yd (m)
<b>Fabric 45" (115 cm) Wide</b>						
View A	2 5/8 (2.40)	2 5/8 (2.40)	2 3/4 (2.55)	2 3/4 (2.55)	2 7/8 (2.65)	yd (m)
View B	2 1/2 (2.30)	2 1/2 (2.30)	2 1/2 (2.30)	2 5/8 (2.40)	2 5/8 (2.40)	yd (m)
<b>Fusible Interfacing 24" (60 cm) Wide</b>						
View A	1 1/8 (1.05)	1 1/8 (1.05)	1 1/8 (1.05)	1 1/4 (1.15)	1 1/4 (1.15)	yd (m)
View B	1 (0.95)	1 (0.95)	1 1/8 (1.05)	1 1/8 (1.05)	1 1/8 (1.05)	yd (m)
<b>Optional Lining 45" (115 cm) Wide</b>						
View A	1 1/2 (1.40)	1 5/8 (1.50)	2 3/8 (2.20)	2 1/2 (2.30)	2 5/8 (2.40)	yd (m)
View B	1 1/2 (1.40)	1 1/2 (1.40)	2 1/8 (1.95)	2 1/4 (2.10)	2 1/4 (2.10)	yd (m)

**Notions:** Thread. APPLIQUÉS: Pieces of contrast fabric and tear-away material. VIEW A: Five 7/8" (22 mm) buttons. VIEW B: Four 7/8" (22 mm) buttons.