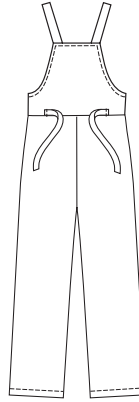


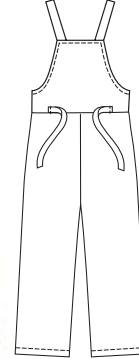
# KWIK & EASY



VIEW A Back



VIEW B Back



PLUS SIZE

Women's overalls have waist seam, front side pockets, bib pocket, shoulder straps that tie together in front, back tie belt, and front and back bibs are double. View B pants are cropped.

## PLUS SIZES

**KWIK•SEW®**  
price **3268**

DESIGNED FOR LIGHT TO MEDIUM WEIGHT WOVEN FABRICS  
Suggested Fabrics: Cotton, cotton types, linen, rayon blends, challis, lightweight twill, lightweight denim

**WOMEN'S OVERALLS**  
Sizes: 1X-2X-3X-4X

Size	1X	2X	3X	4X	
<b>Finished Inside Leg Seam</b>					
View A	30" (76 cm) – All Sizes				
View B	24 1/2" (62 cm) – All Sizes				
<b>Material Required:</b> Fabric requirement allows for nap, one-way design or shading. Extra fabric may be needed to match design or for shrinkage.					
<b>Fabric 60" (152 cm) Wide</b>					
View A	2 7/8 (2.65)	3 3/8 (3.10)	4 1/8 (3.80)	4 1/4 (3.90)	yd (m)
View B	2 5/8 (2.40)	3 3/8 (3.10)	3 3/4 (3.45)	3 7/8 (3.55)	yd (m)
<b>Fabric 45" (115 cm) Wide</b>					
View A	4 1/8 (3.80)	4 1/2 (4.15)	4 5/8 (4.25)	5 (4.60)	yd (m)
View B	3 7/8 (3.55)	4 1/8 (3.80)	4 1/4 (3.90)	4 3/4 (4.35)	yd (m)
<b>Fusible Interfacing 24" (60 cm) Wide</b>					
View A or B	3/8 (0.35)	3/8 (0.35)	3/8 (0.35)	3/8 (0.35)	yd (m)
<b>Notions:</b> Thread.					