

# KWIK Start® LEARN-TO-SEW

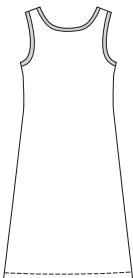
ESPECIALLY DESIGNED FOR FIRST SEWING PROJECT!

KWIK Start® LEARN-TO-SEW



Misses' pullover nightgowns are slightly A-lined and have scoop neckline. Neckline and armholes are finished with bands from contrast fabric. Nightgowns are very easy to make and have special easy-to-follow sewing instructions.

VIEW A Back



VIEW B Back



■ Contrast

**KWIK•SEW®**

**3265** price

**MISSES' NIGHTGOWNS**

Sizes: XS-S-M-L-XL

DESIGNED FOR STRETCH KNITS ONLY WITH 25% STRETCH

Suggested Fabrics: Interlock, thermal knit, textured knits

Size	XS	S	M	L	XL	
<b>Finished Length at Center Back from Neckline</b>						
View A	38 1/2 (98)	39 (99)	40 (101)	40 1/2 (103)	41 (104)	" (cm)
View B	29 (73)	29 1/2 (75)	30 (76)	30 1/2 (78)	31 1/2 (80)	" (cm)
<b>Material Required:</b> Fabric requirement allows for nap, one-way design or shading. Extra fabric may be needed to match design or for shrinkage.						
<b>Fabric 60" (152 cm) Wide</b>						
View A Fabric	1 1/4 (1.15)	1 3/8 (1.30)	1 3/8 (1.30)	1 3/8 (1.30)	2 3/4 (2.55)	yd (m)
Contrast	1/8 (0.15)	1/8 (0.15)	1/8 (0.15)	1/8 (0.15)	1/8 (0.15)	yd (m)
View B Fabric	1 (0.95)	1 (0.95)	1 1/8 (1.05)	1 1/8 (1.05)	1 1/8 (1.05)	yd (m)
Contrast	1/8 (0.15)	1/8 (0.15)	1/8 (0.15)	1/8 (0.15)	1/8 (0.15)	yd (m)

**Notions:** Thread.

SLEEPWEAR & LINGERIE