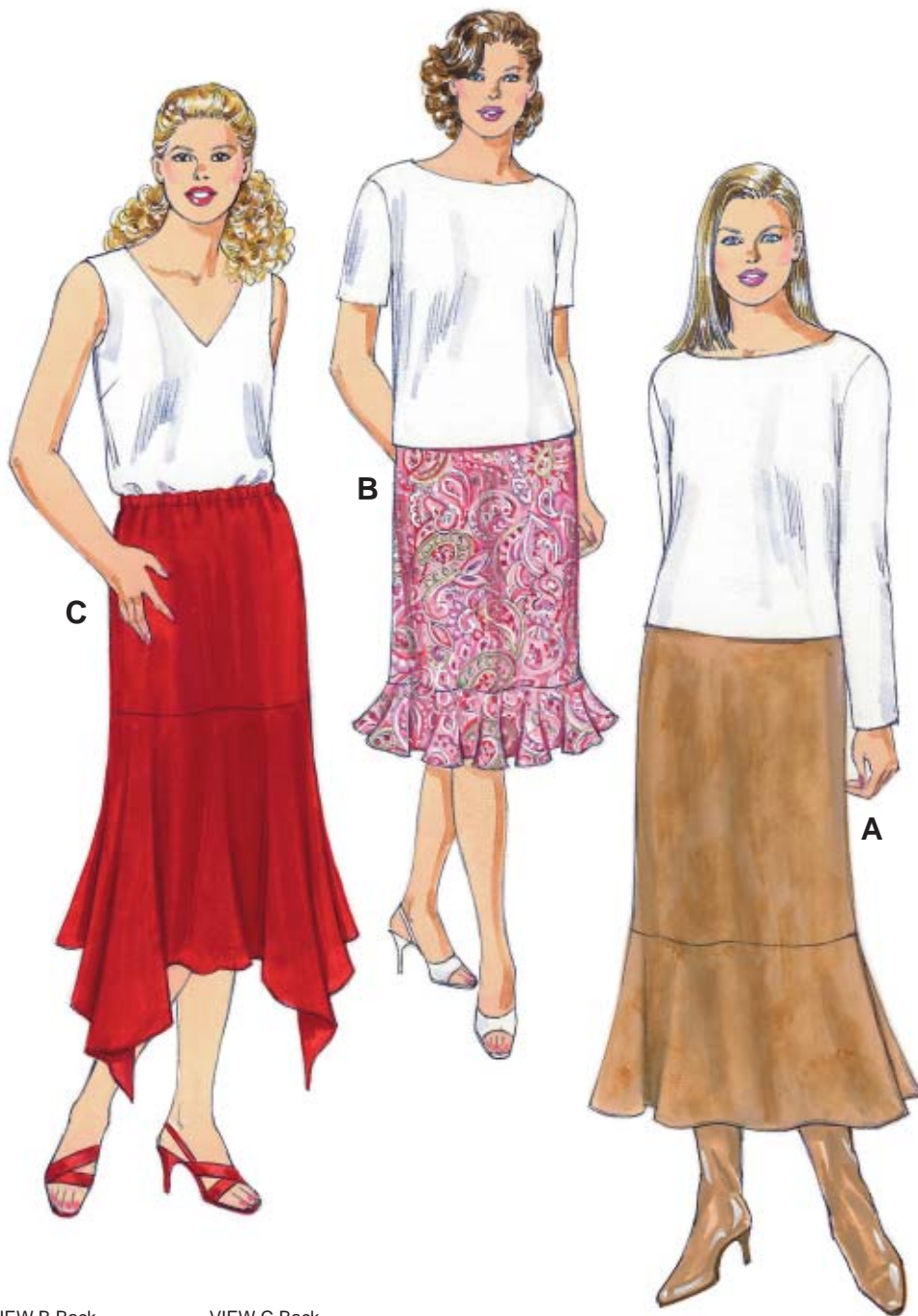


PLUS SIZES

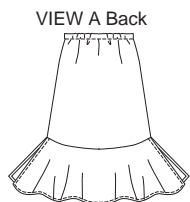


Shown with Top 2836

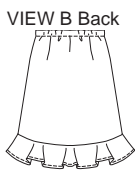
Women's pull-on skirts have elastic in casing at waist. View A has flounce with side slits. View B has circular flounce. View C has "handkerchief flounce" with uneven hemline and four points.



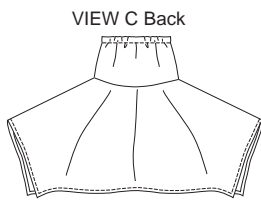
PLUS SIZE



VIEW A Back



VIEW B Back



VIEW C Back

KWIK•SEW®
3256 price

KWIK & EASY

WOMEN'S SKIRTS
Sizes: 1X-2X-3X-4X

DESIGNED FOR LIGHTWEIGHT WOVEN FABRICS

Suggested Fabrics: Cotton types, rayon, challis, handkerchief linen, silk types

Size	1X	2X	3X	4X	
Finished Length					
View A	34" (86 cm) – All Sizes				
View B	28" (71 cm) – All Sizes				
View C (at sides, center front & center back)	31" (79 cm) – All Sizes				
Material Required: Fabric requirement allows for nap, one-way design or shading. Extra fabric may be needed to match design or for shrinkage.					
Fabric 60" (152 cm) Wide					
View A	1 7/8 (1.75)	1 7/8 (1.75)	2 1/2 (2.30)	2 1/2 (2.30)	yd (m)
View B	1 1/2 (1.40)	1 1/2 (1.40)	1 1/2 (1.40)	1 1/2 (1.40)	yd (m)
View C	2 (1.85)	2 (1.85)	2 1/2 (2.30)	2 1/2 (2.30)	yd (m)
Fabric 45" (115 cm) Wide					
View A	2 3/4 (2.55)	2 3/4 (2.55)	2 7/8 (2.65)	2 7/8 (2.65)	yd (m)
View B	2 5/8 (2.40)	2 5/8 (2.40)	2 5/8 (2.40)	2 3/4 (2.55)	yd (m)
View C (Cut on crosswise grain)	3 (2.75)	3 (2.75)	3 1/8 (2.85)	3 1/4 (3.00)	yd (m)

Notions: Thread, 1" (2.5 cm) wide elastic – 1 yd (0.95 m) for size 1X, 1 1/4 yd (1.15 m) for sizes 2X-3X-4X.