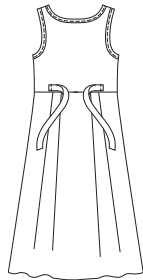


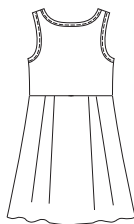


Misses' pullover dresses have scoop neckline and waist seam. Skirt has tucks at waist on front and back. Neckline and armholes are finished with bias-cut bindings. View A has ties on back.

VIEW A Back



VIEW B Back



KWIK•SEW®
3245 price

KWIK & EASY

MISSES' DRESSES
 Sizes: XS-S-M-L-XL

DESIGNED FOR LIGHT TO MEDIUM WEIGHT WOVEN FABRICS
 Suggested Fabrics: Cotton, challis, linen, silk, rayon and blends

Size	XS	S	M	L	XL	
Finished Length of Skirt from Waist						
View A	32" (81 cm) All Sizes					
View B	19" (48 cm) All Sizes					
Material Required: Fabric requirement allows for nap, one-way design or shading. Extra fabric may be needed to match design or for shrinkage.						
Fabric 60" (152 cm) Wide						
View A	2 (1.85)	2 1/8 (1.95)	2 1/8 (1.95)	2 1/8 (1.95)	2 1/2 (2.30)	yd (m)
View B	1 5/8 (1.50)	1 5/8 (1.50)	1 5/8 (1.50)	1 3/4 (1.60)	1 3/4 (1.60)	yd (m)
Fabric 45" (115 cm) Wide						
View A	3 (2.75)	3 (2.75)	3 1/8 (2.85)	3 3/8 (3.10)	3 3/8 (3.10)	yd (m)
View B	2 1/4 (2.10)	2 1/4 (2.10)	2 3/8 (2.20)	2 3/8 (2.20)	2 3/8 (2.20)	yd (m)

Notions: Thread.