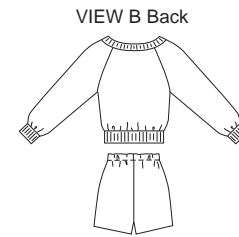
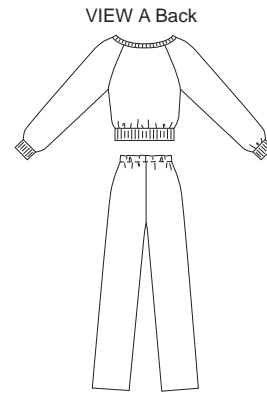
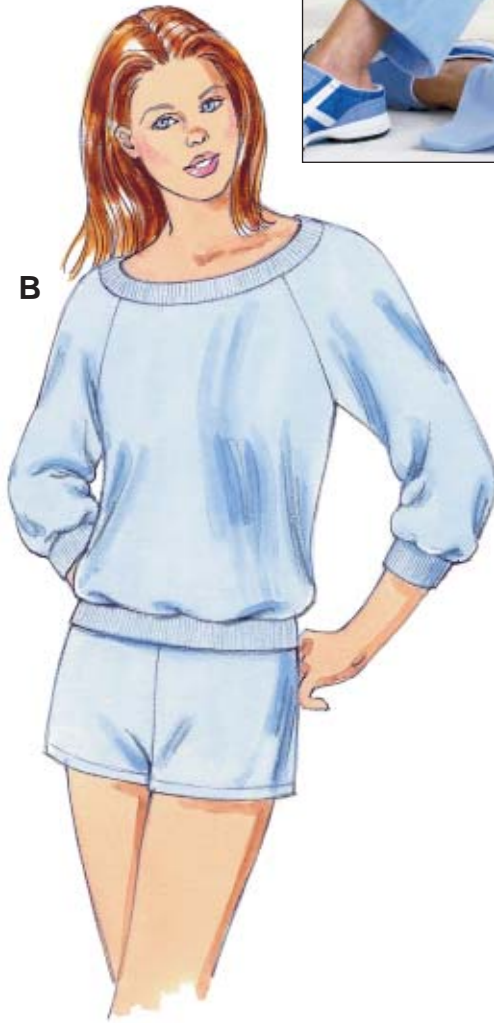


Misses' raglan sleeve pullover tops and pull-on pants and shorts. Tops have boat neckline with ribbing neckband, ribbing waistband and ribbing sleeve cuff. View A has patch pocket and full-length sleeves. View B has three-quarter length sleeves and a wide neckband. Pants and shorts have no side seams and stitched elastic at waist.



PANTS

**KWIK•SEW®**  
**3230** price

**MISSES' TOPS & PANTS** DESIGNED FOR STRETCH KNITS ONLY WITH 25% STRETCH  
 Sizes: XS-S-M-L-XL Suggested Fabrics: Interlock, stretch velvet, stretch terry, stretch velour, textured knits

DUAL INSTRUCTION INCLUDED: SERGER (OVERLOCK) AND STANDARD SEWING MACHINES

| Size   | XS           | S            | M            | L            | XL           |        |
|--|--------------|--------------|--------------|--------------|--------------|--------|
| <b>Finished Length of Top at Center Back from Natural Neckline</b>   |              |              |              |              |              |        |
| View A & B   | 22 1/2 (57)  | 23 (58)      | 23 1/2 (60)  | 24 (61)      | 25 (63)      | " (cm) |
| <b>Finished Inside Leg Seam</b>  |              |              |              |              |              |        |
| View A   | 30 (76)      | 30 (76)      | 30 (76)      | 30 (76)      | 30 (76)      | " (cm) |
| View B   | 2 3/4 (7)    | 2 3/4 (7)    | 2 3/4 (7)    | 2 3/4 (7)    | 2 3/4 (7)    | " (cm) |
| <b>Material Required:</b> Fabric requirement allows for nap, one-way design or shading. Extra fabric may be needed to match design or for shrinkage. |              |              |              |              |              |        |
| <b>Fabric 60" (152 cm) Wide</b>  |              |              |              |              |              |        |
| View A   | 2 1/2 (2.30) | 2 1/2 (2.30) | 2 5/8 (2.40) | 2 3/4 (2.55) | 2 7/8 (2.65) | yd (m) |
| View B   | 1 1/2 (1.40) | 1 5/8 (1.50) | 1 3/4 (1.60) | 1 7/8 (1.75) | 2 (1.85)     | yd (m) |
| <b>Ribbing 28" (70 cm) Wide</b>  |              |              |              |              |              |        |
| View A & B   | 1/2 (0.50)   | 1/2 (0.50)   | 1/2 (0.50)   | 1/2 (0.50)   | 1/2 (0.50)   | yd (m) |

**Notions:** Thread, 1 yd (0.95 m) of 3/4" (2 cm) wide elastic, scrap piece of fusible interfacing.