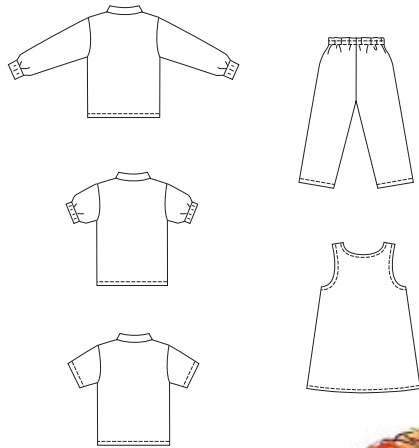


Toddlers' shirts, pants and jumper. Shirt has front placket with buttons, collar from fabric or ribbing, long sleeves with ribbing cuffs, or short sleeves with ribbing cuffs or hemmed short sleeves. Pull-on pants have fake fly, stitched elastic at waist, inverted contrast fabric pleat on front, and topstitching detail. Pullover jumper has button or snaps at shoulder straps. Neckline and armholes are finished with facings.



BABY & TODDLER

KWIK•SEW
price **3211**

PANTS & JUMPER DESIGNED FOR MEDIUM WEIGHT WOVEN FABRICS
Suggested Fabrics: Twill, chino, denim, gabardine, baby corduroy, cotton, cotton types
SHIRTS DESIGNED FOR STRETCH KNITS ONLY WITH 20% STRETCH
Suggested Fabrics: Single knit, interlock, textured knits

**TODDLERS' SHIRTS,
PANTS & JUMPER**
Sizes: T1-T2-T3-T4

Size	T1	T2	T3	T4	
Finished Length at Center Back from Natural Neckline					
Shirt	12 3/4 (32)	13 3/4 (35)	14 1/2 (37)	15 1/2 (39)	" (cm)
Jumper	15 3/4 (40)	17 1/2 (45)	19 1/4 (49)	21 (53)	" (cm)
Finished Inside Leg Seam of Pants	10 (25)	11 1/2 (29)	13 (33)	14 1/2 (36)	" (cm)
Material Required: Fabric requirement allows for nap, one-way design or shading. Extra fabric may be needed to match design or for shrinkage.					
Fabric 60" (152 cm) Wide					
Shirt	1/2 (0.50)	5/8 (0.60)	5/8 (0.60)	5/8 (0.60)	yd (m)
Pants	5/8 (0.60)	3/4 (0.70)	3/4 (0.70)	7/8 (0.80)	yd (m)
Jumper	5/8 (0.60)	5/8 (0.60)	3/4 (0.70)	3/4 (0.70)	yd (m)
Fabric 45" (115 cm) Wide					
Pants	5/8 (0.60)	3/4 (0.70)	3/4 (0.70)	7/8 (0.80)	yd (m)
Jumper	7/8 (0.80)	7/8 (0.80)	1 (0.95)	1 (0.95)	yd (m)
Contrast Fabric 45" (115 cm) or 60" (152 cm) Wide					
Pants - Insets	1/8 (0.15)	1/8 (0.15)	1/8 (0.15)	1/8 (0.15)	yd (m)
Shirt - Facing & Collar (optional)	1/4 (0.25)	1/4 (0.25)	1/4 (0.25)	1/4 (0.25)	yd (m)
Ribbing 28" (70 cm) Wide for Shirt					
Long Sleeve Cuffs	5" (13 cm) All Sizes				
Short Sleeve Cuffs	3" (7 cm) All Sizes				
Collar with or without Cuffs	7" (18 cm) All Sizes				
Notions: Thread. JUMPER: Two 1/2" (13 mm) buttons or snaps. PANTS: 5/8 yd (0.60 m) of 1" (2.5 cm) wide elastic. SHIRT: Two 1/2" (13 mm) buttons, 1/4 yd (0.25 m) of fusible interfacing.					