

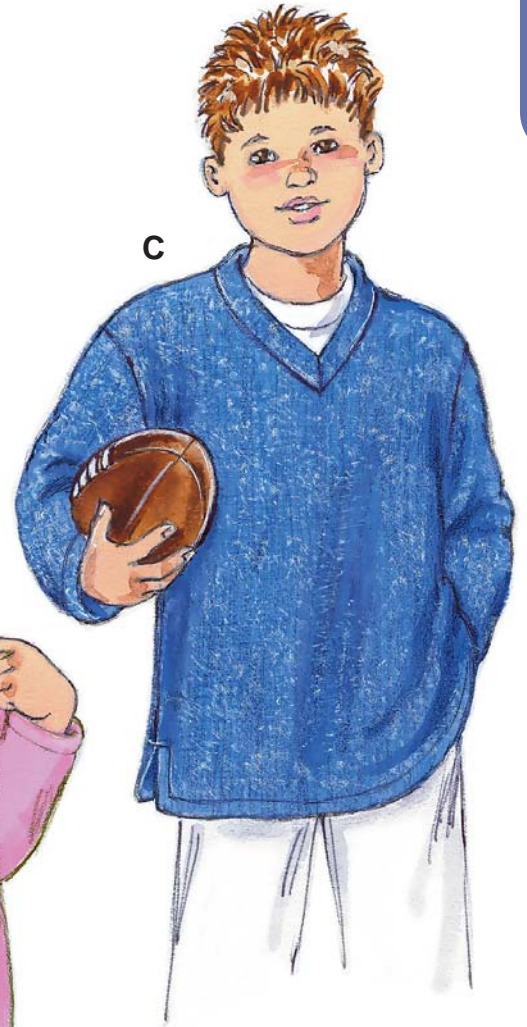
KWIK
Serge®



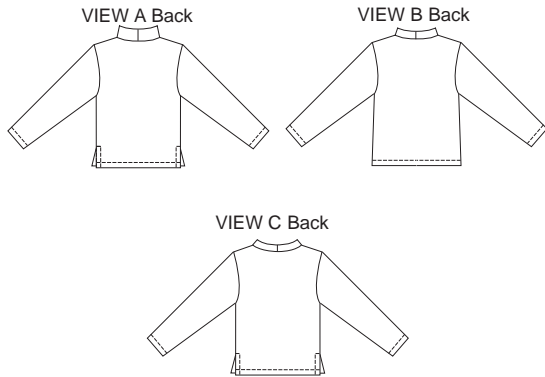
A



B



C



VIEW A Back

VIEW B Back

VIEW C Back

Girls' and boys' pullover shirts with long sleeves. View A has stand up collar. View B has round neckline with neckband. View C has V-neckline. Views A and C have side hemline slits.

KWIK•SEW®
price **3188**

DESIGNED FOR HEAVYWEIGHT STRETCH KNITS

GIRLS' & BOYS' SHIRTS

Suggested Fabrics: Polarfleece®, berber fleece, sweatshirt fleece

Sizes: XS(4-5)–S(6)–M(7-8)–L(10)–XL(12-14)

DUAL INSTRUCTION INCLUDED: SERGER (OVERLOCK) AND STANDARD SEWING MACHINES

Standard Body Measurements:

Size	XS (4-5)	S (6)	M (7-8)	L (10)	XL (12-14)	
Height	42 (107)	46 (117)	50 (127)	55 (140)	60 (152)	" (cm)
Chest	23 1/2 (60)	25 (64)	26 1/2 (67)	28 1/2 (72)	31 (79)	" (cm)
Hip	24 (61)	25 1/2 (65)	27 1/2 (70)	30 (76)	32 (81)	" (cm)

Finished Length at Center Back

View A, B or C	16 (41)	17 1/2 (44)	19 (48)	20 3/4 (52)	22 1/2 (57)	" (cm)
----------------	---------	-------------	---------	-------------	-------------	--------

Material Required: Fabric requirement allows for nap, one-way design or shading. Extra fabric may be needed to match design or for shrinkage.

Fabric 60" (152 cm) Wide

View A, B & C	3/4 (0.70)	1 (0.95)	1 1/4 (1.15)	1 3/8 (1.30)	1 3/8 (1.30)	yd (m)
---------------	------------	----------	--------------	--------------	--------------	--------

Notions: Thread, scrap piece of fusible interfacing.