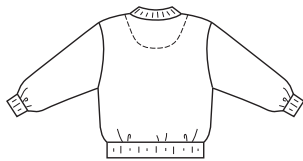




Bag
Pattern
3171

Misses' unlined jacket has welt pockets, ribbing cuffs, ribbing neckband, and ribbing waistband with fabric extensions. View A has front zipper closure and View B has front snap closure.

View A & B Back



A



B



KWIK•SEW®
3157 price

MISSES' JACKETS DESIGNED FOR WOVEN FABRICS
Sizes: XS-S-M-L-XL Suggested Fabrics: Cotton, twill, silk, satin, denim, poplin, windbreaker fabric, rayon & blends

Size	XS	S	M	L	XL	
Finished Length at Center Back						
View A & B	19 1/2 (50)	20 (51)	20 1/2 (52)	21 1/4 (54)	22 (56)	" (cm)
Material Required: Fabric requirement allows for nap, one-way design or shading. Extra fabric may be needed to match design or for shrinkage.						
Fabric 60" (152 cm) Wide						
View A	1 3/8 (1.30)	1 3/8 (1.30)	1 1/2 (1.40)	1 1/2 (1.40)	1 1/2 (1.40)	yd (m)
View B	1 1/2 (1.40)	1 1/2 (1.40)	1 1/2 (1.40)	1 5/8 (1.50)	1 5/8 (1.50)	yd (m)
Fabric 45" (115 cm) Wide						
View A or B	1 5/8 (1.50)	2 (1.85)	2 1/8 (1.95)	2 1/8 (1.95)	2 1/4 (2.10)	yd (m)
Ribbing 28" (70 cm) Wide						
View A or B	12 (30)	16 (40)	16 (40)	16 (40)	16 (40)	" (cm)
Fusible Interfacing 24" (60 cm) Wide						
View A or B	3/4 (0.70)	3/4 (0.70)	3/4 (0.70)	7/8 (0.80)	7/8 (0.80)	yd (m)

Notions: Thread, VIEW A: One 20" (50 cm) separating zipper (purchase suggested length of zipper or longer, zipper will be trimmed).
VIEW B: Five snaps.