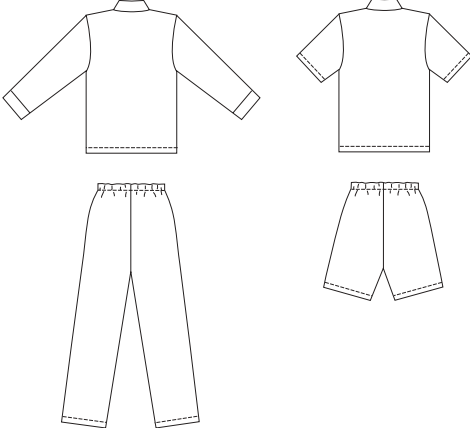




Women's pajamas. Shirt has collar, front button closure, and side hemline slits. View A shirt has patch pocket with pocket band and long sleeves with cuffs. View B shirt has short sleeves. Pull-on pants and shorts have elastic at waist

VIEW A

VIEW B



KWIK-SEW®
3148 price

PLUS SIZES

WOMEN'S PAJAMAS
 Sizes: 1X-2X-3X-4X

DESIGNED FOR LIGHTWEIGHT WOVEN FABRICS
 Suggested Fabrics: Cotton, broadcloth, chambray, flannelette, silk-like fabrics

Size	1X	2X	3X	4X	
Finished Length of Shirt at Center Back					
View A & B	30 (76)	30 1/2 (77)	31 (79)	31 1/2 (80)	" (cm)
Finished Inside Leg Seam					
View A	29" (73 cm) – All Sizes				
View B	6" (15 cm) – All Sizes				
Material Required: Fabric requirement allows for nap, one-way design or shading. Extra fabric may be needed to match design or for shrinkage.					
Fabric 60" (152 cm) Wide					
View A	3 7/8 (3.55)	4 1/8 (3.80)	4 5/8 (4.25)	4 3/4 (4.35)	yd (m)
View B	2 5/8 (2.40)	3 1/4 (3.00)	3 3/8 (3.10)	3 3/8 (3.10)	yd (m)
Fabric 45" (115 cm) Wide					
View A	5 5/8 (5.15)	5 3/4 (5.30)	5 3/4 (5.30)	5 7/8 (5.40)	yd (m)
View B	3 7/8 (3.55)	4 (3.70)	4 1/8 (3.80)	4 1/4 (3.90)	yd (m)
Fusible Interfacing 24" (60 cm) Wide					
View A & B	1 (0.95)	1 (0.95)	1 (0.95)	1 (0.95)	yd (m)
Notions: Thread, four 3/4" (20 mm) buttons, 1 1/4 yd (1.15 m) of 1" (2.5 cm) wide elastic.					

PLUS SIZE