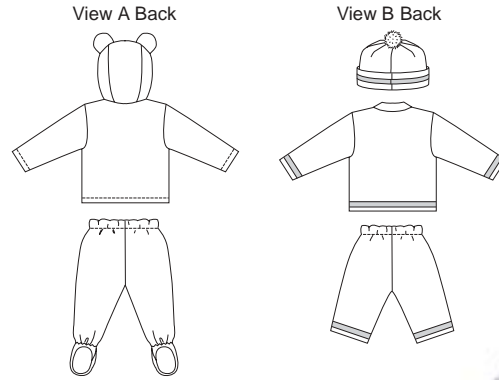


Baby jackets, pants and hat. View A jacket has long sleeves, zipper front, and hood with ears and elastic in casing. Pants have feet and elastic waist. View B jacket has Peter Pan collar, long sleeves, and snap closure. Pants have elastic waist. Hat has fold-up cuff and pompom. Jacket, pants, and hat have optional decorative trim.



BABY & TODDLER

KWIK•SEW®
price **3127**

DESIGNED FOR MEDIUM TO HEAVYWEIGHT STRETCH KNITS
Suggested Fabrics: Sweatshirt fleece, blanket fleece, double knit, French terry, lightweight fleece, berber fleece

BABY JACKETS, PANTS & HAT
Sizes: XS-S-M-L-XL

Size	XS	S	M	L	XL	
Month	Newborn	0-3	3-6	6-12	12-18	
Head Circumference	13 1/2 (34)	15 (38)	16 1/2 (42)	18 (46)	19 1/2 (49)	" (cm)
Finished Length of Jacket at Center Back						
View A & B	8 (21)	9 (24)	10 (26)	11 (29)	12 (31)	" (cm)
Material Required: Fabric requirement allows for nap, one-way design or shading. Extra fabric may be needed to match design or for shrinkage.						
Fabric 60" (152 cm) Wide						
View A Jacket & Pants	3/4 (0.70)	3/4 (0.70)	7/8 (0.80)	1 (0.95)	1 1/8 (1.05)	yd (m)
View B Jacket, Pants & Hat	7/8 (0.80)	7/8 (0.80)	1 (0.95)	1 (0.95)	1 1/8 (1.05)	yd (m)
Fusible Interfacing 24" (60 cm) Wide						
View B	3/8 (0.35)	3/8 (0.35)	3/8 (0.35)	3/8 (0.35)	3/8 (0.35)	yd (m)
Notions: Thread. VIEW A: One 12" (30 cm) separating zipper, 1/2 yd (0.50 m) of 3/8" (1 cm) wide elastic, 1/2 yd (0.50 m) of 3/4" (2 cm) wide elastic, 1/2 yd (0.50 m) of 1/8" (3 mm) wide elastic. VIEW B: 10" x 10" (25 cm x 25 cm) piece of woven fabric for neckline binding, 1/2" (13 mm) snaps - three for sizes XS-S; four for sizes M-L-XL, 1/2 yd (0.50 m) of 3/4" (2 cm) wide elastic, optional trim 3/4"-1 1/4" (2 cm - 3 cm) wide - 1 3/8 yd (1.30 m) for sizes XS-S; 1 3/4 yd (1.60 m) for sizes M-L-XL, one pompom (optional).						
NOTE: Purchase suggested length of zipper or longer, zipper will be trimmed.						