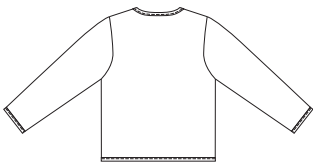
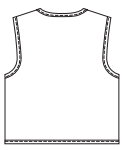


Jacket Back



Vest Back



Misses' Jacket and Vest have contrast fabric lining, button closure on front, and outside edges finished with bias cut bindings from fabric or contrast fabric. Appliqué shapes are included to help you create your own decorative embellishments.



JACKET & VEST
provide a surface
for your
**Creative
Expressions**

JACKETS

KWIK•SEW®

3116 price

MISSES' JACKET & VEST

Sizes: XS-S-M-L-XL

DESIGNED FOR LIGHT TO MEDIUM WEIGHT WOVEN FABRICS

Suggested Fabrics: Cotton types, linen, wool, velveteen, brocade, twill, denim

Contrast Fabric Lining in same or lining type fabrics

Size	XS	S	M	L	XL	
Finished Length at Center Back						
Jacket	22 3/4 (58)	23 1/2 (60)	24 1/4 (62)	25 (63)	25 1/4 (65)	" (cm)
Vest	19 3/4 (50)	20 1/4 (51)	20 3/4 (53)	21 1/2 (54)	22 (56)	" (cm)
Material Required: Fabric requirement allows for nap, one-way design or shading. Extra fabric may be needed to match design or for shrinkage.						
Fabric and Contrast Fabric 60" (152 cm) Wide – EACH*						
Jacket	1 3/8 (1.30)	1 1/2 (1.40)	1 1/2 (1.40)	1 1/2 (1.40)	1 5/8 (1.50)	yd (m)
Vest	3/4 (0.70)	3/4 (0.70)	3/4 (0.70)	3/4 (0.70)	3/4 (0.70)	yd (m)
Fabric and Contrast Fabric 45" (115 cm) Wide – EACH*						
Jacket	1 3/8 (1.30)	1 7/8 (1.75)	2 1/4 (2.10)	2 1/4 (2.10)	2 3/8 (2.20)	yd (m)
Vest	3/4 (0.70)	1 (0.95)	1 (0.95)	1 3/8 (1.30)	1 3/8 (1.30)	yd (m)
Fabric 45" (115 cm) or 60" (152 cm) Wide						
Jacket Binding	5/8 (0.60)	5/8 (0.60)	5/8 (0.60)	5/8 (0.60)	3/4 (0.70)	yd (m)
Vest Binding	1/2 (0.50)	5/8 (0.60)	5/8 (0.60)	5/8 (0.60)	5/8 (0.60)	yd (m)
Fusible Interfacing 24" (60 cm) Wide						
Jacket	5/8 (0.60)	5/8 (0.60)	5/8 (0.60)	3/4 (0.70)	3/4 (0.70)	yd (m)
Vest	1/2 (0.50)	1/2 (0.50)	1/2 (0.50)	1/2 (0.50)	1/2 (0.50)	yd (m)

Notions: Thread. JACKET: Four 3/4" (20 mm) buttons. VEST: Three 3/4" (20 mm) buttons.

OPTIONAL APPLIQUÉS and EMBELLISHMENTS: Scrap pieces of fabrics, paper-backed fusible web, tear-away material, and trims such as ribbon, braid, lace or soutache, as desired.

* Does not include binding, be sure to add amount for binding to fabric or contrast fabric requirements.