

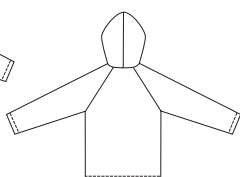


Girls' raglan sleeve shirts and pull-on pants. View A pullover shirt has round neckline with ribbing neckband and side hemline slits. View B shirt has zipper front, patch pockets and hood. Pants have slightly flared legs and elastic in casing at waist.

VIEW A Back



VIEW B Back



PANTS VIEW A and B



KWIK•SEW®
price **3101**

DESIGNED FOR STRETCH KNITS ONLY

Suggested Fabrics: Polarfleece®, sweatshirt fleece, French terry, double knit

GIRLS' SHIRTS & PANTS

Sizes: XS (4-5), S (6), M (7-8), L (10), XL (12-14)

Size	XS (4-5)	S (6)	M (7-8)	L (10)	XL (12-14)	
Height	42 (107)	46 (117)	50 (127)	55 (140)	60 (152)	" (cm)
Chest	23 1/2 (60)	25 (64)	26 1/2 (67)	28 1/2 (72)	31 (79)	" (cm)
Waist	22 (56)	23 (58)	24 (61)	25 (64)	27 (68)	" (cm)
Hip	24 (61)	25 1/2 (65)	27 1/2 (70)	30 (76)	32 (81)	" (cm)
Finished Length of Shirt at Center Back						
View A	19 1/4 (49)	20 3/4 (52)	22 (56)	22 3/4 (60)	25 1/2 (65)	" (cm)
View B	17 (43)	18 (45)	19 (48)	20 1/2 (52)	22 (56)	" (cm)
Finished Inside Leg Seam						
	17 (43)	19 1/4 (49)	21 1/2 (54)	24 (61)	27 (69)	" (cm)
Material Required: Fabric requirement allows for nap, one-way design or shading. Extra fabric may be needed to match design or for shrinkage.						
Fabric 60" (152 cm) Wide						
View A	1 3/8 (1.30)	1 1/2 (1.40)	2 (1.85)	2 1/8 (1.95)	2 3/8 (2.20)	yd (m)
View B	1 3/8 (1.30)	1 1/2 (1.40)	1 3/4 (1.60)	2 1/8 (1.95)	2 3/8 (2.20)	yd (m)
Ribbing 28" (70 cm) Wide						
View A	3 (8)	3 (8)	3 (8)	3 (8)	3 (8)	" (cm)

Notions: Thread, 3/4 yd (0.75 m) of 3/4" (2 cm) wide elastic. VIEW B: Scrap piece of fusible interfacing, one separating zipper - 16" (40 cm) for sizes XS - S, 18" (45 cm) for sizes M-L, 20" (50 cm) for size XL. Purchase suggested length of zipper or longer - zipper will be trimmed.