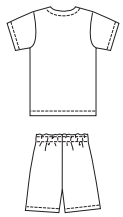
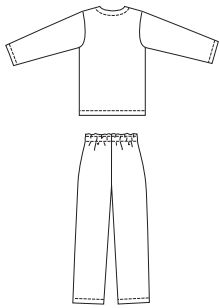




Boys' pajamas. Pullover shirt has V-neckline finished with facing and patch pocket. Pants have stitched elastic waist with drawstring. View A has long sleeves and full length pants. View B has short sleeves and shorts.

VIEW A Back

VIEW B Back



**KWIK•SEW®**  
**3042** price

**BOYS' PAJAMAS**

Sizes: XS (4-5), S (6), M (7-8), L (10), XL (12-14)

DESIGNED FOR LIGHTWEIGHT WOVEN FABRICS

Suggested Fabrics: Cotton, cotton types, broadcloth, chambray, flannel

Size	XS (4-5)	S (6)	M (7-8)	L (10)	XL (12-14)	
Height	42 (107)	46 (117)	50 (127)	55 (140)	60 (152)	" (cm)
Chest	23 1/2 (60)	25 (64)	26 1/2 (67)	28 1/2 (72)	31 (79)	" (cm)
Waist	22 (56)	23 (58)	24 (61)	25 (64)	27 (68)	" (cm)
Hip	24 (61)	25 1/2 (65)	27 1/2 (70)	30 (76)	32 (81)	" (cm)
<b>Finished Length of Top at Center Back</b>						
View A or B	16 1/2 (42)	18 (46)	19 1/4 (49)	21 (53)	22 3/4 (58)	" (cm)
<b>Finished Inside Leg Seam</b>						
View A	17 (43)	19 1/4 (49)	21 1/2 (54)	24 (61)	27 (68)	" (cm)
View B	5 (12)	5 3/4 (14)	6 1/2 (16)	7 1/4 (18)	8 1/4 (21)	" (cm)
<b>Material Required:</b> Fabric requirement allows for nap, one-way design or shading. Extra fabric may be needed to match design or for shrinkage.						
<b>Fabric 60" (152 cm) Wide</b>						
View A	1 7/8 (1.75)	2 (1.85)	2 1/4 (2.10)	2 3/8 (2.20)	2 5/8 (2.40)	yd (m)
View B	1 3/8 (1.30)	1 1/2 (1.40)	1 5/8 (1.50)	1 5/8 (1.50)	1 3/4 (1.60)	yd (m)
<b>Fabric 45" (115 cm) Wide</b>						
View A	1 7/8 (1.75)	2 3/8 (2.20)	2 1/2 (2.30)	2 3/4 (2.55)	3 1/2 (3.20)	yd (m)
View B	1 3/8 (1.30)	1 5/8 (1.50)	1 3/4 (1.60)	2 (1.85)	2 3/8 (2.20)	yd (m)
<b>Fusible Interfacing 24" (60 cm) Wide</b>						
View A or B	3/8 (0.35)	3/8 (0.35)	3/8 (0.35)	3/8 (0.35)	3/8 (0.35)	yd (m)

**Notions:** Thread, 1 1/2" (4 cm) wide elastic - 5/8 yd (0.60 m) for sizes XS - S - M - L; 3/4 yd (0.70 m) for size XL. Drawstring for waist.