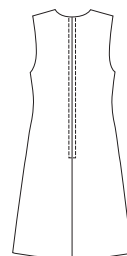
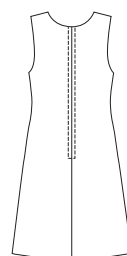


Misses' A-line, semi-fitted jumpers have bust darts and back zipper. Neckline and armholes are finished with self fabric facings. View A has round neckline, View B has V-neckline, View C has scoop neckline.

VIEW A & B Back



VIEW C Back



KWIK·SEW®

price **3011**

DESIGNED FOR MEDIUM WEIGHT WOVEN AND FIRM KNIT FABRICS

Suggested Fabrics: Wool, wool types, linen, rayon suiting, silk suiting, double knit, corduroy, cotton types

MISSSES' JUMPERS
Sizes: XS-S-M-L-XL

Size	XS	S	M	L	XL	
Finished Length at Center back from Natural Neckline						
Views A, B & C	41 1/4 (105)	41 3/4 (106)	42 1/4 (107)	43 (109)	43 1/2 (111)	" (cm)
Material Required: Fabric requirement allows for nap, one-way design or shading. Extra fabric may be needed to match design or for shrinkage.						
Fabric 60" (152 cm) Wide						
Views A, B & C	1 5/8 (1.50)	1 5/8 (1.50)	1 3/4 (1.60)	1 3/4 (1.60)	2 (1.85)	yd (m)
Fabric 45" (115 cm) Wide						
Views A, B & C	2 3/8 (2.20)	2 1/2 (2.30)	2 5/8 (2.40)	3 (2.75)	3 (2.75)	yd (m)
Notions: Thread. One 22" (55 cm) zipper, optional interfacing for facings if fabric is soft and / or lightweight.						