



A

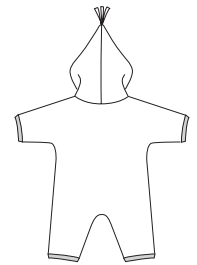


Baby buntings have hood with tassel, overlapped front with Velcro® closures, and outside edges are finished with bindings from swimwear fabric. View B has fold over mittens, and covers feet.



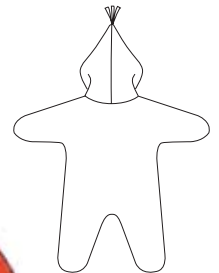
B

VIEW A Back



□ Fabric
■ Swimwear Fabric

VIEW B Back



KWIK•SEW®

price **2995**

DESIGNED FOR HEAVYWEIGHT STRETCH KNITS ONLY

Suggested Fabrics: Polarfleece®, blanket fleece, berber fleece, heavyweight sweatshirt fleece
Bindings from swimwear fabric with greatest degree of stretch on lengthwise grain

BABY BUNTINGS
Sizes: XS-S-M-L-XL

Size	XS	S	M	L	XL	
Material Required: Fabric requirement allows for nap, one way design or shading. Extra fabric may be needed to match design or for shrinkage.						
Fabric 60" (152 cm) Wide						
View A	3/4 (0.70)	3/4 (0.70)	1 1/8 (1.05)	1 1/4 (1.15)	1 3/8 (1.30)	yd (m)
View B	3/4 (0.70)	7/8 (0.80)	1 1/4 (1.15)	1 1/2 (1.40)	1 3/4 (1.60)	yd (m)
Swimwear Fabric 10" (25 cm) Wide (Minimum Width)						
View A	1 1/8 (1.05)	1 1/4 (1.15)	1 1/4 (1.15)	1 3/8 (1.30)	1 3/8 (1.30)	yd (m)
View B	7/8 (0.80)	1 (0.95)	1 1/8 (1.05)	1 1/8 (1.05)	1 1/4 (1.15)	yd (m)
Notions: Thread. 5/8" (1.5 cm) wide Velcro® - 5" (13 cm) for sizes XS - S - M, 6" (15 cm) for sizes L - XL. Optional - 4" (10 cm) square piece of contrast fabric for tassel.						