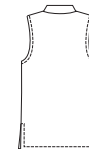




Misses' pants, shorts and shirts. Pull-on pants and shorts have pockets in side seams, waistband with elastic, and front is flat. Sleeveless shirts have bust darts, collar, side hemline slits, and armholes are finished with self fabric bias cut bindings.

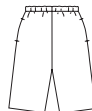
SHIRT VIEW A Back

SHIRT VIEW B Back



PANTS VIEW A

SHORTS VIEW B



PANTS

**KWIK-SEW®**  
price **2979**

**DESIGNED FOR LIGHT TO MEDIUM WEIGHT WOVEN FABRICS**

Suggested Fabrics: Cotton, cotton types, linen, challis, rayon and blends, silk

**MISSES' PANTS, SHORTS & SHIRTS**

Sizes: XS-S-M-L-XL

Size	XS	S	M	L	XL	
<b>Finished Length of Shirt at Center Back</b>						
View A	24 3/4 (63)	25 1/2 (65)	26 1/2 (67)	27 1/2 (69)	28 1/2 (72)	" (cm)
View B	19 1/4 (48)	19 1/2 (49)	20 1/4 (51)	20 3/4 (52)	21 1/2 (54)	" (cm)
<b>Finished Inside Leg Seam</b>						
View A	24 1/2 (62)	24 1/2 (62)	24 1/2 (62)	24 1/2 (62)	24 1/2 (62)	" (cm)
View B	10 (25)	10 (25)	10 (25)	10 (25)	10 (25)	" (cm)
<b>Material Required:</b> Fabric requirement allows for nap, one-way design or shading. Extra fabric may be needed to match design or for shrinkage.						
<b>Fabric 60" (152 cm) Wide</b>						
Shirt View A	1 1/8 (1.05)	1 1/8 (1.05)	1 1/8 (1.05)	1 1/4 (1.15)	1 5/8 (1.50)	yd (m)
Shirt View B	7/8 (0.80)	7/8 (0.80)	1 (0.95)	1 (0.95)	1 1/8 (1.05)	yd (m)
Pants View A	1 3/8 (1.30)	1 1/2 (1.40)	1 3/4 (1.60)	2 (1.85)	2 (1.85)	yd (m)
Shorts View B	1 (0.95)	1 (0.95)	1 1/8 (1.05)	1 1/4 (1.15)	1 1/4 (1.15)	yd (m)
<b>Fabric 45" (115 cm) Wide</b>						
Shirt View A	1 3/4 (1.60)	1 7/8 (1.75)	1 7/8 (1.75)	2 (1.85)	2 1/8 (1.95)	yd (m)
Shirt View B	1 1/2 (1.40)	1 1/2 (1.40)	1 5/8 (1.50)	1 5/8 (1.50)	1 3/4 (1.60)	yd (m)
Pants View A	2 1/8 (1.95)	2 1/4 (2.10)	2 1/4 (2.10)	2 1/4 (2.10)	2 3/8 (2.20)	yd (m)
Shorts View B	1 3/8 (1.30)	1 3/8 (1.30)	1 3/8 (1.30)	1 1/2 (1.40)	1 5/8 (1.50)	yd (m)
<b>Fusible Interfacing 24" (60 cm) Wide</b>						
Shirt View A	7/8 (0.80)	7/8 (0.80)	7/8 (0.80)	1 (0.95)	1 (0.95)	yd (m)
Shirt View B	3/4 (0.70)	3/4 (0.70)	3/4 (0.70)	3/4 (0.70)	3/4 (0.70)	yd (m)

**Notions:** Thread. SHIRT VIEW A: five 5/8" (15 mm) buttons. SHIRT VIEW B: four 5/8" (15 mm) buttons. PANTS VIEW A & SHORTS VIEW B: scrap piece of interfacing, 1 yd (0.95 m) of 3/4" (2 cm) wide elastic.