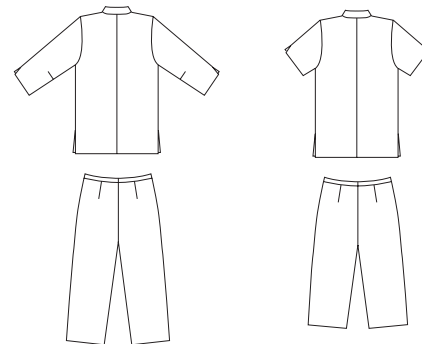




Women's shirts and pants. Shirts have bust darts, collar, and side hemline slits. View A has three quarter length sleeves with center sleeve seams and slits. View B has short sleeves with center sleeve seams and slits. Pants have darts on front and back, fly zipper and narrow waistband; View A are cropped and View B are capri length.

VIEW A Back

VIEW B Back



**KWIK•SEW®**  
**2929** price

# PLUS SIZES

**WOMEN'S PANTS & SHIRTS**  
 Sizes: 1X-2X-3X-4X

DESIGNED FOR LIGHT TO MEDIUM WEIGHT WOVEN FABRICS  
 Suggested Fabrics: Cotton, cotton types, linen, challis, silk, rayon and blends  
 Pants also in twill, denim, gabardine

Size	1X	2X	3X	4X	
<b>Finished Length of Shirt at Center Back</b>					
View A & B	27 3/4 (70)	28 1/4 (72)	28 3/4 (73)	29 1/4 (75)	" (cm)
<b>Finished Outside Leg Seam</b>					
View A	37 1/2 (95)	38 (96)	38 1/2 (97)	39 (99)	" (cm)
View B	31 1/2 (80)	32 (81)	32 1/2 (82)	33 (83)	" (cm)
<b>Material Required:</b> Fabric requirement allows for nap, one-way design or shading. Extra fabric may be needed to match design or for shrinkage.					
<b>Fabric 60" (152 cm) Wide</b>					
View A Shirt & Pants	3 3/4 (3.45)	3 7/8 (3.55)	4 (3.70)	4 3/8 (4.00)	yd (m)
Shirt	2 1/4 (2.10)	2 1/2 (2.30)	2 1/2 (2.30)	2 5/8 (2.40)	yd (m)
Pants	1 7/8 (1.75)	2 (1.85)	2 1/4 (2.10)	2 3/8 (2.20)	yd (m)
View B Shirt	2 (1.85)	2 1/8 (1.95)	2 1/8 (1.95)	2 1/8 (1.95)	yd (m)
Pants	1 5/8 (1.50)	1 3/4 (1.60)	2 (1.85)	2 (1.85)	yd (m)
<b>Fabric 45" (115 cm) Wide</b>					
View A Shirt & Pants	5 3/8 (4.95)	5 3/8 (4.95)	5 1/2 (5.05)	5 7/8 (5.40)	yd (m)
Shirt	2 7/8 (2.65)	2 7/8 (2.65)	3 (2.75)	3 3/8 (3.10)	yd (m)
Pants	2 3/8 (2.20)	2 1/2 (2.30)	2 1/2 (2.30)	2 1/2 (2.30)	yd (m)
View B Shirt	2 5/8 (2.40)	2 5/8 (2.40)	2 3/4 (2.55)	3 (2.75)	yd (m)
Pants	2 1/8 (1.95)	2 1/8 (1.95)	2 1/8 (1.95)	2 1/8 (1.95)	yd (m)
<b>Fusible Interfacing 24" (60 cm) Wide</b>					
Shirt	1 (0.95)	1 (0.95)	1 (0.95)	1 1/8 (1.05)	yd (m)
<b>Notions:</b> Thread. Shirt: Four 3/4" (20 mm) buttons. Pants: One zipper - 9" (23 cm) for size 1X; 11" (28 cm) for sizes 2X - 3X - 4X, one hook and eye. Purchase suggested length of zipper or longer, zipper will be trimmed.					