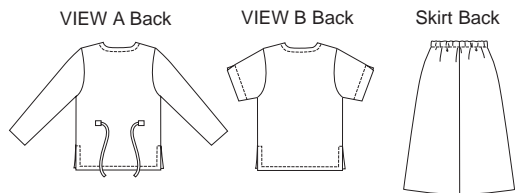




PLUS SIZE

Women's skirt and tops. Pull-on flared skirt has elastic in casing at waist. View A top has bust darts, V-neckline, front button closure, side hemline slits, ties on back and full length sleeves. View B pullover top has bust darts, faced V-neckline, side hemline slits and short sleeves with slits.



KWIK•SEW®
2923 price

PLUS SIZES

WOMEN'S SKIRT & TOPS DESIGNED FOR LIGHT TO MEDIUM WEIGHT WOVEN AND FIRM KNIT FABRICS
 Sizes: 1X-2X-3X-4X Suggested Fabrics: Cotton, cotton types, silk like fabrics, double knit, linen, rayon, crepe, challis

Size	1X	2X	3X	4X	
Finished Length of Top at Center Back					
View A & B	28 (71)	28 1/2 (72)	29 (74)	29 1/2 (75)	" (cm)
Finished Length of Skirt	36" (91 cm) - All Sizes				
Material Required: Fabric requirement allows for nap, one-way design or shading. Extra fabric may be needed to match design or for shrinkage.					
Fabric 60" (152 cm) Wide					
View A & B	4 1/8 (3.80)	4 1/8 (3.80)	4 1/8 (3.80)	4 1/4 (3.90)	yd (m)
Fabric 45" (115 cm) Wide					
View A	4 3/4 (4.35)	4 7/8 (4.50)	4 7/8 (4.50)	5 7/8 (5.40)	yd (m)
View B	4 1/2 (4.15)	4 1/2 (4.15)	4 5/8 (4.25)	5 1/8 (4.70)	yd (m)
Fusible Interfacing 24" (60 cm) Wide					
View A	1 (0.95)	1 (0.95)	1 (0.95)	1 (0.95)	yd (m)
View B	1/2 (0.50)	1/2 (0.50)	1/2 (0.50)	1/2 (0.50)	yd (m)
Notions: Thread. VIEW A TOP: Four 3/4" (20 mm) buttons. VIEW A & B SKIRT: 1" (2.5 cm) wide elastic - 1 yd (0.95 m) for size 1X; 1 1/4 yd (1.15 m) for sizes 2X - 3X - 4X.					