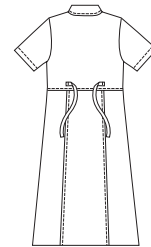


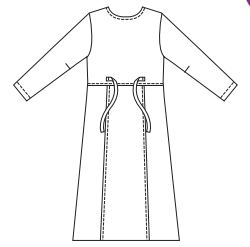


Women's dresses have front button closure, bust darts, waist seam, slightly flared panel skirt and ties on back. View A has collar and short sleeves. View B has scoop neckline finished with bias cut self fabric binding, full length sleeves and pockets on front side panels.

VIEW A Back



VIEW B Back



PLUS SIZES

KWIK-SEW®
price **2922**

DESIGNED FOR LIGHT TO MEDIUM WEIGHT WOVEN FABRICS

Suggested Fabrics: Cotton, cotton types, rayon, challis, linen, denim, silk, silk like fabrics

WOMEN'S DRESSES

Sizes: 1X-2X-3X-4X

| Size | 1X | 2X | 3X | 4X | |
|--|-------------------------|--------------|--------------|--------------|--------|
| Finished Length of Dress from Waist | 34" (86 cm) - All Sizes | | | | |
| Material Required: Fabric requirement allows for nap, one-way design or shading. Extra fabric may be needed to match design or for shrinkage. | | | | | |
| Fabric 60" (152 cm) Wide | | | | | |
| View A | 3 (2.75) | 3 1/4 (3.00) | 3 3/8 (3.10) | 3 3/8 (3.10) | yd (m) |
| View B | 3 5/8 (3.35) | 3 5/8 (3.35) | 3 3/4 (3.45) | 3 3/4 (3.45) | yd (m) |
| Fabric 45" (115 cm) Wide | | | | | |
| View A | 3 3/4 (3.45) | 3 7/8 (3.55) | 4 1/4 (3.90) | 4 3/4 (4.35) | yd (m) |
| View B | 4 1/4 (3.90) | 4 3/8 (4.00) | 4 5/8 (4.25) | 5 (4.60) | yd (m) |
| Fusible Interfacing 24" (60 cm) Wide | | | | | |
| View A & B | 1 1/8 (1.05) | 1 1/8 (1.05) | 1 1/8 (1.05) | 1 1/8 (1.05) | yd (m) |
| Notions: Thread. VIEW A: Eleven 3/4" (20 mm) buttons. VIEW B: Nine 3/4" (20 mm) buttons. | | | | | |

PLUS SIZE