

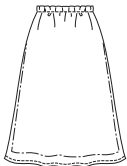


Misses' tops and skirts. View A halter top has lined upper front, gathers under bust and button closure on back and at back neckline. View B "handkerchief" bias cut top has outside edges finished with narrow hems and one tie in casing that gathers neckline and ties in back. Pull-on bias cut skirt has narrow elastic in casing at waist. View A skirt is lined and lining is 2" (5 cm) shorter.

TOP VIEW A  
Back



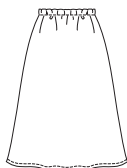
SKIRT VIEW A  
Front & Back



TOP VIEW B  
Back



SKIRT VIEW B  
Front & Back



**KWIK-SEW®**  
**2904** price

**MISSES' TOPS & SKIRTS**  
Sizes: XS-S-M-L-XL

DESIGNED FOR LIGHTWEIGHT SOFT WOVEN FABRICS

Suggested Fabrics: Rayon, rayon blends, silk, silk like fabrics, challis.

VIEW A Skirt also in sheer fabrics such as chiffon, batiste, voile, georgette

Size	XS	S	M	L	XL	
<b>Finished Length of Skirt (Length may vary due to bias cut)</b>						" (cm)
View A & B	24 (61)	24 (61)	24 (61)	24 (61)	24 (61)	
<b>Material Required:</b> Fabric requirement allows for nap, one-way design or shading. Extra fabric may be needed to match design or for shrinkage.						
<b>Fabric 60" (152 cm) Wide</b>						
Top View A	5/8 (0.60)	5/8 (0.60)	5/8 (0.60)	3/4 (0.70)	3/4 (0.70)	yd (m)
Top View B	3/4 (0.70)	3/4 (0.70)	7/8 (0.80)	7/8 (0.80)	7/8 (0.80)	yd (m)
Skirt View A & B	1 3/8 (1.30)	1 3/8 (1.30)	1 1/2 (1.40)	1 1/2 (1.40)	1 5/8 (1.50)	yd (m)
<b>Lining 60" (152 cm) Wide</b>						
Top View A	5/8 (0.60)	5/8 (0.60)	5/8 (0.60)	3/4 (0.70)	3/4 (0.70)	yd (m)
Skirt View A	1 1/4 (1.15)	1 1/4 (1.15)	1 3/8 (1.30)	1 3/8 (1.30)	1 1/2 (1.40)	yd (m)
<b>Fabric 45" (115 cm) Wide</b>						
Top View A	1 (0.95)	1 (0.95)	1 (0.95)	1 (0.95)	1 (0.95)	yd (m)
Top View B	3/4 (0.70)	3/4 (0.70)	7/8 (0.80)	7/8 (0.80)	7/8 (0.80)	yd (m)
Skirt View A & B	1 5/8 (1.50)	1 3/4 (1.60)	1 3/4 (1.60)	1 7/8 (1.75)	1 7/8 (1.75)	yd (m)
<b>Lining 45" (115 cm) Wide</b>						
Top View A	5/8 (0.60)	5/8 (0.60)	5/8 (0.60)	3/4 (0.70)	3/4 (0.70)	yd (m)
Skirt View A	1 1/2 (1.40)	1 5/8 (1.50)	1 5/8 (1.50)	1 3/4 (1.60)	1 3/4 (1.60)	yd (m)
<b>Non-Fusible Interfacing 24" (60 cm) Wide</b>						
Top View A	1/4 (0.25)	1/4 (0.25)	1/4 (0.25)	1/4 (0.25)	1/4 (0.25)	yd (m)

**Notions:** Thread. Top VIEW A: Four 5/8" (15 mm) buttons. Skirt VIEW A & B: 1 yd (0.95 m) of 3/8" (1 cm) wide elastic.