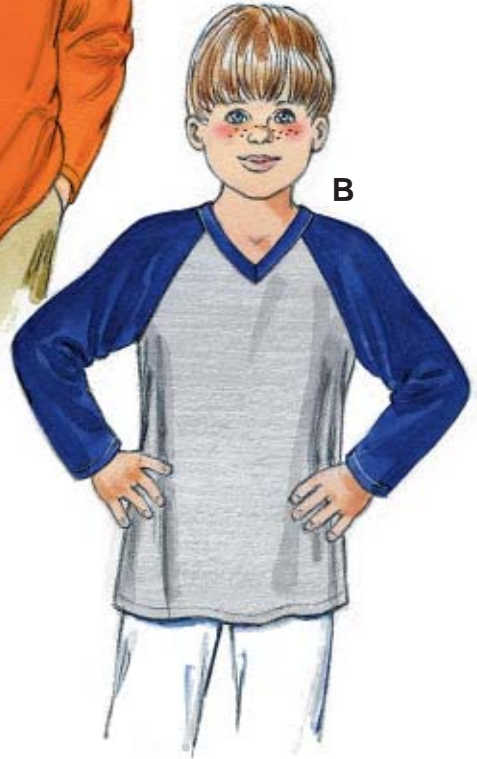


A



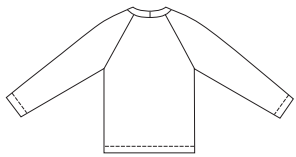
B



C

Boys' raglan sleeve shirts. View A has round neckline with self fabric neckband. View B has V-neckline and sleeves and neckband from contrast fabric. View C has hood, contrast elbow length sleeves with pocket.

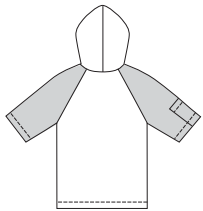
VIEW A Back



VIEW B Back



VIEW C Back



□ Fabric
 ■ Contrast Fabric

KWIK-SEW®
2894 price



BOYS' SHIRTS

Sizes: XS (4-5), S (6), M (7-8), L (10), XL (12-14)

DESIGNED FOR STRETCH KNITS ONLY WITH 25% STRETCH
 Suggested Fabrics: Interlock, jersey, thermal knits, textured knits

DUAL INSTRUCTION INCLUDED: SERGER (OVERLOCK) AND STANDARD SEWING MACHINES

Size	XS (4-5)	S (6)	M (7-8)	L (10)	XL (12-14)	
Height	42 (107)	46 (117)	50 (127)	55 (140)	60 (152)	" (cm)
Chest	23 1/2 (60)	25 (64)	26 1/2 (67)	28 1/2 (72)	31 (79)	" (cm)
Hip	24 (61)	25 1/2 (65)	27 1/2 (70)	30 (76)	32 (81)	" (cm)
Finished Length at Center Back						
View A, B & C	18 (46)	19 1/2 (50)	21 (54)	23 (59)	25 (64)	" (cm)
Material Required: Fabric requirement allows for nap, one-way design or shading. Extra fabric may be needed to match design or for shrinkage.						
Fabric 60" (152 cm) Wide						
View A	3/4 (0.70)	7/8 (0.80)	1 1/8 (1.05)	1 3/8 (1.30)	1 1/2 (1.40)	yd (m)
View B Fabric	5/8 (0.60)	5/8 (0.60)	3/4 (0.70)	3/4 (0.70)	7/8 (0.80)	yd (m)
Contrast Fabric	5/8 (0.60)	5/8 (0.60)	3/4 (0.70)	3/4 (0.70)	7/8 (0.80)	yd (m)
View C Fabric	5/8 (0.60)	5/8 (0.60)	3/4 (0.70)	7/8 (0.80)	1 (0.95)	yd (m)
Contrast Fabric	1/2 (0.50)	1/2 (0.50)	1/2 (0.50)	1/2 (0.50)	1/2 (0.50)	yd (m)

Notions: Thread. VIEW C: Scrap piece of fusible interfacing.