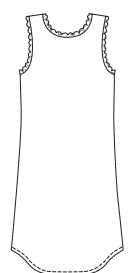


Misses' tank style nightgowns have shaped hemlines. Gowns are bias cut when using woven fabrics and cut on straight grain when using knit fabric. View A neckline, armholes and bottom edge are finished with narrow hems. View B and C have neckline and armholes finished with narrow lace. View B has lace appliqué. View C has V-neckline.

VIEW A Back

VIEW B & C Back



KWIK & EASY

KWIK•SEW®
price **2766**

DESIGNED FOR LIGHTWEIGHT SOFT WOVEN AND KNIT FABRIC
Suggested Fabrics: Silk, silk like fabrics, batiste, broadcloth, crepe de chine, single knit, nylon tricot

MISSES' NIGHTGOWNS
Sizes: XS-S-M-L-XL

Size	XS	S	M	L	XL	
Finished Length at Center Back from Natural Neckline						
View A, B or C	33 (84)	34 (86)	35 (89)	36 (91)	37 (94)	" (cm)
NOTE: When using woven fabrics, finished length may vary due to bias cut.						
Material Required: Fabric requirement allows for nap, one-way design or shading. Extra fabric may be needed to match design or for shrinkage.						
Knit Fabric 60" (152 cm) and 98" (249 cm) Wide						
View A, B & C	1 (0.95)	1 1/8 (1.05)	1 1/8 (1.05)	1 1/8 (1.05)	1 1/8 (1.05)	yd (m)
Woven Fabric 60" (152 cm) Wide						
View A, B & C	1 1/8 (1.05)	1 1/4 (1.15)	1 3/8 (1.30)	1 1/2 (1.40)	1 5/8 (1.50)	yd (m)
Woven Fabric 45" (115 cm) Wide						
View A, B & C	1 1/2 (1.40)	1 5/8 (1.50)	1 3/4 (1.60)	1 7/8 (1.75)	2 (1.85)	yd (m)
Notions: Thread. VIEW B & C: 1/4" - 1/2" (6 mm - 13 mm) wide lace - 2 1/4 yd (2.10 m) for sizes XS-S; 2 5/8 yd (2.40 m) for sizes M-L-XL. VIEW B: Lace appliqué.						