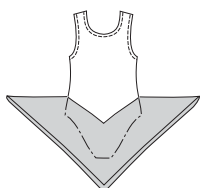


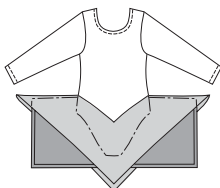


Girls' leotard with attached skirt has scoop neckline and all outside edges finished with elastic. View A is sleeveless and has single layer square skirt from contrast fabric. View B has long sleeves and two layer square skirt from contrast fabric. View C has long sleeves and circular skirt. Front and sleeves can be decorated with rhinestones, pearls or sequins.

VIEW A Back



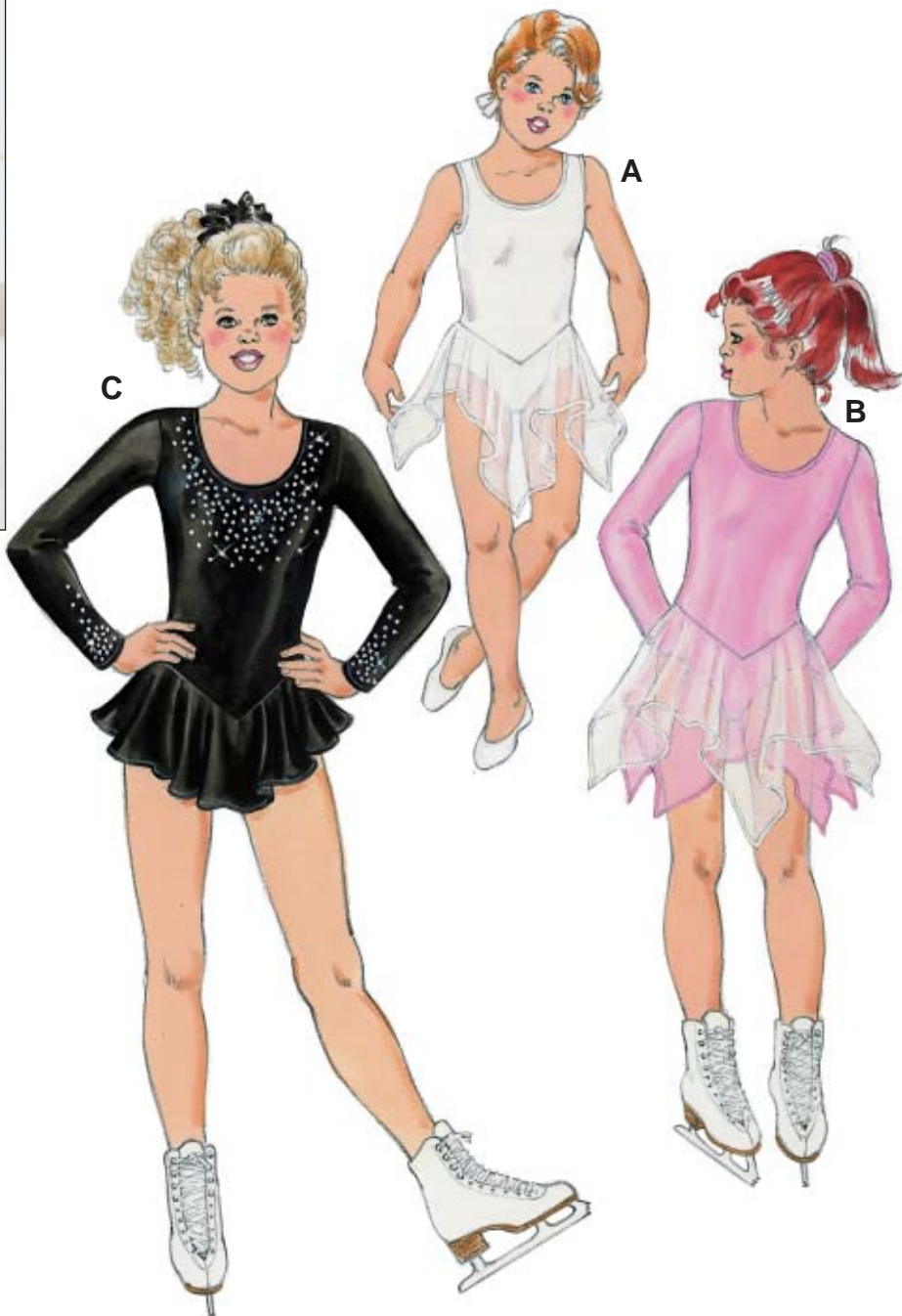
VIEW B Back



VIEW C Back



- Fabric
- Contrast I
- Contrast II



KWIK•SEW®

2732

2733 price

GIRLS' LEOTARDS

2732 Sizes: 4-5-6-7

2733 Sizes: 8-10-12-14

DESIGNED FOR TWO-WAY STRETCH FABRIC WITH 75% STRETCH

Suggested Fabrics: Cotton Lycra®, nylon Lycra®, stretch velvet with Lycra®, swimwear fabric

Contrast Fabric: Sheer woven and knit fabrics, chiffon, georgette, sheer Lycra®

Size	4	5	6	7	8	10	12	14	
Material Required: Fabric requirement allows for nap, one-way design or shading. Extra fabric may be needed to match design or for shrinkage.									
Fabric 60" (152 cm) Wide with Greatest Degree of Stretch on Crosswise Grain									
View A	1/2 (0.50)	1/2 (0.50)	1/2 (0.50)	1/2 (0.50)	1/2 (0.50)	5/8 (0.60)	5/8 (0.60)	5/8 (0.60)	yd (m)
View B	3/4 (0.70)	3/4 (0.70)	3/4 (0.70)	3/4 (0.70)	7/8 (0.80)	7/8 (0.80)	7/8 (0.80)	1 (0.95)	yd (m)
View C	7/8 (0.80)	1 (0.95)	1 (0.95)	1 (0.95)	1 1/8 (1.05)	1 1/8 (1.05)	1 1/4 (1.15)	1 1/4 (1.15)	yd (m)
Fabric 45" (115 cm) Wide with Greatest Degree of Stretch on Lengthwise Grain									
View A	1/2 (0.50)	1/2 (0.50)	1/2 (0.50)	3/4 (0.70)	3/4 (0.70)	7/8 (0.80)	7/8 (0.80)	7/8 (0.80)	yd (m)
View B	3/4 (0.70)	3/4 (0.70)	3/4 (0.70)	1 (0.95)	1 1/8 (1.05)	1 1/8 (1.05)	1 1/8 (1.05)	1 1/4 (1.15)	yd (m)
View C	1 (0.95)	1 1/8 (1.05)	1 1/8 (1.05)	1 1/4 (1.15)	1 3/8 (1.30)	1 1/2 (1.40)	1 5/8 (1.50)	1 3/4 (1.60)	yd (m)
Contrast Fabric 45" (115 cm) or 60" (152 cm) Wide									
View A	5/8 (0.60)	3/4 (0.70)	3/4 (0.70)	3/4 (0.70)	3/4 (0.70)	7/8 (0.80)	7/8 (0.80)	7/8 (0.80)	yd (m)
View B Contrast I	5/8 (0.60)	3/4 (0.70)	3/4 (0.70)	3/4 (0.70)	3/4 (0.70)	7/8 (0.80)	7/8 (0.80)	7/8 (0.80)	yd (m)
Contrast II	5/8 (0.60)	3/4 (0.70)	3/4 (0.70)	3/4 (0.70)	3/4 (0.70)	7/8 (0.80)	7/8 (0.80)	7/8 (0.80)	yd (m)

Notions: Thread. VIEW A: 3/8" (1 cm) wide elastic – 2 3/8 yd (2.20 m) for sizes 4-7; 2 5/8 yd (2.40 m) for sizes 8-10; 2 7/8 yd (2.65 m) for sizes 12-14. VIEW B & C: 3/8" (1 cm) wide elastic – 1 5/8 yd (1.50 m) for sizes 4-7; 1 7/8 yd (1.75 m) for sizes 8-14. VIEW C: Rhinestones, pearls or sequins as desired.