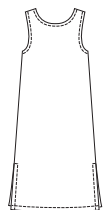




Misses' jumpers and pinafore have scoop neckline. Neckline and armholes are finished with bias cut bindings. View A pullover jumper has pockets in side seams. View B pullover pinafore has patch pockets and side hemline slits. View C jumper has front button closure and patch pockets.

VIEW A & C Back

VIEW B Back



KWIK & EASY

KWIK•SEW®
price **2716**

DESIGNED FOR LIGHT TO MEDIUM WEIGHT WOVEN FABRICS
Suggested Fabrics: Linen, cotton, challis, silk, crepe, rayon, faille

MISSSES' JUMPERS & PINAFORE
Sizes: XS-S-M-L-XL

Size	XS	S	M	L	XL	
Finished Length from Waist						
View A & C	35" (89 cm) - All Sizes					
View B	31" (79 cm) - All Sizes					
Material Required:	Fabric requirement allows for nap, one-way design or shading. Extra fabric may be needed to match design or for shrinkage.					
Fabric 60" (152 cm) Wide						
View A	2 1/4 (2.10)	2 1/4 (2.10)	2 1/4 (2.10)	3 1/8 (2.85)	3 1/8 (2.85)	yd (m)
View B	2 1/8 (1.95)	2 1/8 (1.95)	2 1/8 (1.95)	2 7/8 (2.65)	2 7/8 (2.65)	yd (m)
View C	2 (1.85)	2 1/8 (1.95)	2 1/4 (2.10)	2 3/4 (2.55)	2 7/8 (2.65)	yd (m)
Fabric 45" (115 cm) Wide						
View A	3 1/8 (2.85)	3 1/4 (3.00)	3 3/8 (3.10)	3 3/8 (3.10)	3 1/2 (3.20)	yd (m)
View B	3 (2.75)	3 (2.75)	3 1/8 (2.85)	3 1/8 (2.85)	3 1/4 (3.00)	yd (m)
View C	3 1/8 (2.85)	3 1/4 (3.00)	3 3/8 (3.10)	3 3/8 (3.10)	3 1/2 (3.20)	yd (m)
Fusible Interfacing 22" (56 cm) Wide						
View C	1 3/8 (1.30)	1 3/8 (1.30)	1 3/8 (1.30)	1 3/8 (1.30)	1 3/8 (1.30)	yd (m)

Notions: Thread. VIEW B: Scrap piece of fusible interfacing. VIEW C: Nine 5/8" (15 mm) buttons.