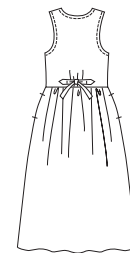




Misses' loose fitting jumper has gathered skirt, neckline and armholes finished with bias cut bindings, and ties on back. View A has button closure on front bodice and pockets in side seams. View B has V-neckline, buttoned front and patch pockets. Appliqué designs for bird houses and fish are included in pattern.

VIEW A Back

VIEW B Back



Appliqués



KWIK•SEW®
price **2671**

DESIGNED FOR LIGHT TO MEDIUM WEIGHT WOVEN AND FIRM KNIT FABRICS
Suggested Fabrics: Cotton, cotton types, linen, challis, lightweight denim, chambray, rayon blends, double knit

MISSSES' JUMPERS
Sizes: XS-S-M-L-XL

Size	XS	S	M	L	XL	
Finished Length from Waist						
View A & B	32 (81)	32 (81)	32 (81)	32 (81)	32 (81)	" (cm)
Material Required: Fabric requirement allows for nap, one-way design or shading. Extra fabric may be needed to match design or for shrinkage.						
Fabric 60" (152 cm) Wide						
View A	2 5/8 (2.40)	2 5/8 (2.40)	2 5/8 (2.40)	2 3/4 (2.55)	2 3/4 (2.55)	yd (m)
View B	2 5/8 (2.40)	2 3/4 (2.55)	2 3/4 (2.55)	2 7/8 (2.65)	3 (2.75)	yd (m)
Fabric 45" (115 cm) Wide						
View A	3 1/8 (2.85)	3 1/4 (3.00)	3 1/4 (3.00)	3 1/4 (3.00)	3 3/8 (3.10)	yd (m)
View B	3 1/8 (2.85)	3 1/8 (2.85)	3 5/8 (3.35)	3 5/8 (3.35)	3 3/4 (3.45)	yd (m)
Fusible Interfacing 22" (56 cm) Wide						
View A	3/8 (0.35)	3/8 (0.35)	3/8 (0.35)	1/2 (0.50)	1/2 (0.50)	yd (m)
View B	1 (0.95)	1 (0.95)	1 (0.95)	1 (0.95)	1 (0.95)	yd (m)

Notions: Thread. VIEW A: Three 5/8" (15 mm) buttons or three decorative buttons and three sew-on snaps. VIEW B: Nine 5/8" (15 mm) buttons or nine decorative buttons and nine sew-on snaps. Appliqué (optional): Scrap pieces of fabric, lightweight fusible interfacing, paper backed fusible web and tear-away materials, thread.