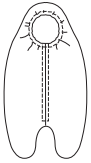


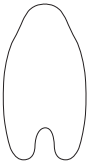


Baby buntings fit in car seats. View A bunting for newborns has front zipper and hood with elastic in casing. View B has raglan sleeves with mitts, front zipper, and hood with elastic in casing.

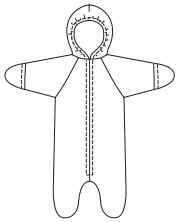
VIEW A Front



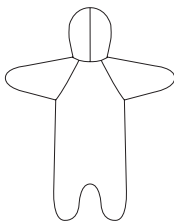
VIEW A Back



VIEW B Front



VIEW B Back



KWIK•SEW®

2640 price

KWIK & EASY

BABY BUNTINGS

VIEW A Sizes: XS-S-M

VIEW B Sizes: S-M-L-XL

DESIGNED FOR HEAVYWEIGHT STRETCH KNITS ONLY

Suggested Fabrics: Polarfleece®, blanket fleece, heavy sweatshirt fleece

Contrast Fabric VIEW A in lightweight knits

Size	XS	S	M	L	XL	
Material Required: Fabric requirement allows for nap, one-way design or shading. Extra fabric may be needed to match design or for shrinkage.						
Fabric 60" (152 cm) Wide						
View A	3/4 (0.70)	7/8 (0.80)	7/8 (0.80)	—	—	yd (m)
View B	—	7/8 (0.80)	1 (0.95)	1 (0.95)	1 1/8 (1.05)	yd (m)
Contrast Fabric 16" (40 cm) Wide (minimum width) for hood facing						
View A	3/8 (0.35)	3/8 (0.35)	3/8 (0.35)	—	—	yd (m)

Notions: Thread, 1/2 yd (0.50 m) of 3/8" (1 cm) wide elastic.

VIEW A: One zipper – 14" (36 cm) for size XS; 16" (41 cm) for sizes S-M.

VIEW B: One zipper – 14" (36 cm) for size S; 16" (41 cm) for sizes M-L; 18" (45 cm) for size XL.