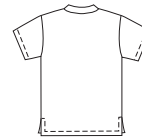


BOYS'

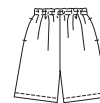
Boys' oversized shirts and shorts. Shirts have extended shoulders, short sleeves, front yoke and side hemline slits. View A has V-neckline with overlapped self fabric neckband. View B has round neckline with ribbing neckband, contrast yoke and contrast sleeves. Pull-on shorts have side pockets, tucks on front, fake fly opening, and elastic waist.

VIEW A Back

VIEW B Back



SHORTS Back



□ Fabric
 ■ Contrast I
 ■ Contrast II

KWIK•SEW®
 price **2604**

KWIK & EASY

SHIRT DESIGNED FOR STRETCH KNITS ONLY WITH 20% STRETCH

Suggested Fabrics: Single knits, golf knit, French terry, interlock

SHORTS DESIGNED FOR MEDIUM WEIGHT WOVEN FABRICS

Suggested Fabrics: Twill, chino, gabardine, denim, sheeting

BOYS' SHIRTS & SHORTS

Sizes: XS (4-5), S (6), M (7-8), L (10), XL (12-14)

Size	XS (4-5)	S (6)	M (7-8)	L (10)	XL (12-14)	
Height	42 (107)	46 (117)	50 (127)	55 (140)	60 (152)	" (cm)
Chest	23 1/2 (60)	25 (64)	26 1/2 (67)	28 1/2 (72)	31 (79)	" (cm)
Hip	24 (61)	25 1/2 (65)	27 1/2 (70)	30 (76)	32 (81)	" (cm)
Finished Length of Shirt at Center Back						
View A or B	18 1/2 (47)	20 1/2 (52)	22 3/4 (58)	24 3/4 (63)	26 3/4 (68)	" (cm)
Finished Outside Leg Seam of Shorts						
	12 1/2 (32)	14 1/2 (37)	16 1/2 (42)	18 1/2 (47)	21 (53)	" (cm)
Material Required: Fabric requirement allows for nap, one-way design or shading. Extra fabric may be needed to match design or for shrinkage.						
Fabric 60" (152 cm) Wide						
Shorts	5/8 (0.60)	3/4 (0.70)	7/8 (0.80)	1 (0.95)	1 1/8 (1.05)	yd (m)
Shirt View A	7/8 (0.80)	1 (0.95)	1 1/8 (1.05)	1 1/8 (1.05)	1 1/4 (1.15)	yd (m)
View B Fabric	5/8 (0.60)	3/4 (0.70)	3/4 (0.70)	7/8 (0.80)	7/8 (0.80)	yd (m)
Contrast I	1/4 (0.25)	1/4 (0.25)	1/4 (0.25)	1/4 (0.25)	1/4 (0.25)	yd (m)
Contrast II	3/8 (0.35)	3/8 (0.35)	3/8 (0.35)	3/8 (0.35)	3/8 (0.35)	yd (m)
Fabric 45" (115 cm) Wide						
Shorts	3/4 (0.70)	7/8 (0.80)	1 (0.95)	1 3/8 (1.30)	1 1/2 (1.40)	yd (m)
Ribbing 16" (40 cm) Wide						
Shirt View B	3 (8)	3 (8)	3 (8)	3 (8)	3 (8)	" (cm)

Notions: Thread, scrap piece of fusible interfacing. SHORTS: 3/4 yd (0.60 m) of 1" (2.5 cm) wide elastic.