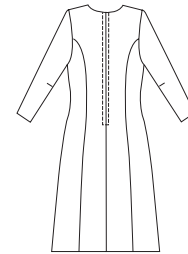
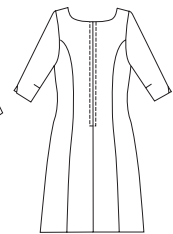


Misses' fitted, princess line dresses have zipper at center back. View A has jewel neckline and long slim sleeves. View B has scoop neckline and three-quarter length sleeves with slit at hem. View C sleeveless dress has scoop neckline and self fabric belt with buckle.

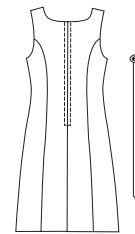
VIEW A Back



VIEW B Back



VIEW C Back



KWIK•SEW®
2554 price

KWIK & EASY

MISSES' DRESSES
 Sizes: XS-S-M-L-XL

DESIGNED FOR LIGHT TO MEDIUM WEIGHT WOVEN AND FIRM KNIT FABRICS
 Suggested Fabrics: Linen, linen types, crepe, silk, silk types, shantung, cotton, cotton blends, double knit

Size	XS	S	M	L	XL	
Finished Length from Natural Waist						
View A	32 (81)	32 (81)	32 (81)	32 (81)	32 (81)	" (cm)
View B & C	20 (51)	20 (51)	20 (51)	20 (51)	20 (51)	" (cm)
Material Required: Fabric requirement allows for nap, one-way design or shading. Extra fabric may be needed to match design or for shrinkage.						
Fabric 60" (152 cm) Wide						
View A	2 1/8 (1.95)	2 1/8 (1.95)	2 5/8 (2.40)	2 5/8 (2.40)	2 5/8 (2.40)	yd (m)
View B	1 3/4 (1.60)	1 3/4 (1.60)	1 7/8 (1.75)	1 7/8 (1.75)	1 7/8 (1.75)	yd (m)
View C	1 1/2 (1.40)	1 1/2 (1.40)	2 1/8 (1.95)	2 1/8 (1.95)	2 1/8 (1.95)	yd (m)
Fabric 45" (115 cm) Wide						
View A	3 3/8 (3.10)	3 1/2 (3.20)	3 1/2 (3.20)	3 1/2 (3.20)	3 5/8 (3.35)	yd (m)
View B	2 3/4 (2.55)	2 3/4 (2.55)	2 3/4 (2.55)	2 3/4 (2.55)	2 7/8 (2.65)	yd (m)
View C	2 3/8 (2.20)	2 3/8 (2.20)	2 1/2 (2.30)	2 1/2 (2.30)	2 1/2 (2.30)	yd (m)
Lightweight Fusible Interfacing 22" (56 cm) Wide						
View A	1/4 (0.25)	1/4 (0.25)	1/4 (0.25)	1/4 (0.25)	1/4 (0.25)	yd (m)
View B	1/2 (0.50)	1/2 (0.50)	1/2 (0.50)	1/2 (0.50)	1/2 (0.50)	yd (m)
View C	1 (0.95)	1 1/8 (1.05)	1 1/4 (1.15)	1 1/4 (1.15)	1 3/8 (1.30)	yd (m)

Notions: Thread, hook and eye. VIEW A: One 22" (55 cm) zipper. VIEW B: One 20" (50 cm) zipper. VIEW C: One 20" (50 cm) zipper, one 1 1/4" (3 cm) wide belt buckle.