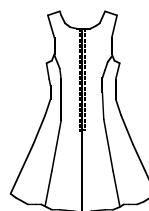
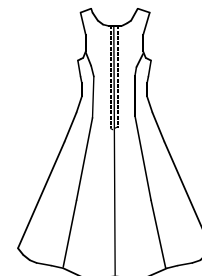


Misses' semi-fitted sleeveless princess line dresses have flared skirts and zipper at center back. View A has sweetheart neckline and self fabric bow. View B and C have scoop neckline.

VIEW A & B Back



VIEW C Back



KWIK•SEW®
price **2514**

DESIGNED FOR SOFT LIGHT TO MEDIUM WEIGHT WOVEN AND FIRM KNIT FABRICS
Suggested Fabrics: Challis, crepe, silk, silk types, faille, cotton, cotton blends, double knit, rayon, rayon blends

MISSES' DRESSES
Sizes: XS-S-M-L-XL

Size	XS	S	M	L	XL	
Finished Length from Natural Waist						
View A & B	18 1/2 (47)	18 1/2 (47)	18 1/2 (47)	18 1/2 (47)	18 1/2 (47)	" (cm)
View C	34 (86)	34 (86)	34 (86)	34 (86)	34 (86)	" (cm)
Finished Width at Bottom Edge						
View A & B	57 (145)	60 (153)	64 (162)	67 (170)	70 (180)	" (cm)
View C	81 (206)	84 1/2 (214)	88 (224)	91 1/2 (233)	95 1/2 (242)	" (cm)
Material Required: Fabric requirement allows for nap, one-way design or shading. Extra fabric may be needed to match design or for shrinkage.						
Fabric 60" (152 cm) Wide						
View A or B	2 (1.85)	2 (1.85)	2 (1.85)	2 (1.85)	2 1/8 (1.95)	yd (m)
View C	3 (2.75)	3 1/8 (2.85)	3 1/8 (2.85)	3 1/8 (2.85)	3 1/8 (2.85)	yd (m)
Fabric 45" (115 cm) Wide						
View A or B	2 3/4 (2.55)	2 7/8 (2.65)	2 7/8 (2.65)	2 7/8 (2.65)	3 (2.75)	yd (m)
View C	4 1/8 (3.80)	4 1/8 (3.80)	4 1/8 (3.80)	4 3/8 (4.00)	4 1/2 (4.15)	yd (m)
Lightweight Fusible Interfacing 22" (56 cm) Wide						
View A, B or C	5/8 (0.60)	5/8 (0.60)	3/4 (0.70)	3/4 (0.70)	7/8 (0.80)	yd (m)
Notions: Thread, one 20" (50 cm) zipper, one hook and eye.						